



Land Registers Interconnection (LRI) project

EC: State-of-play

IMOLA closing conference



28 January 2016

Overview

Aims of this talk

Timing & Milestones

Conceptual Use Case

- **A high-level presentation of envisioned system**

Governance

In this talk...

Update all stakeholders on progress on the project so far

Inform stakeholders on next steps, process

Provide a common high-level vision

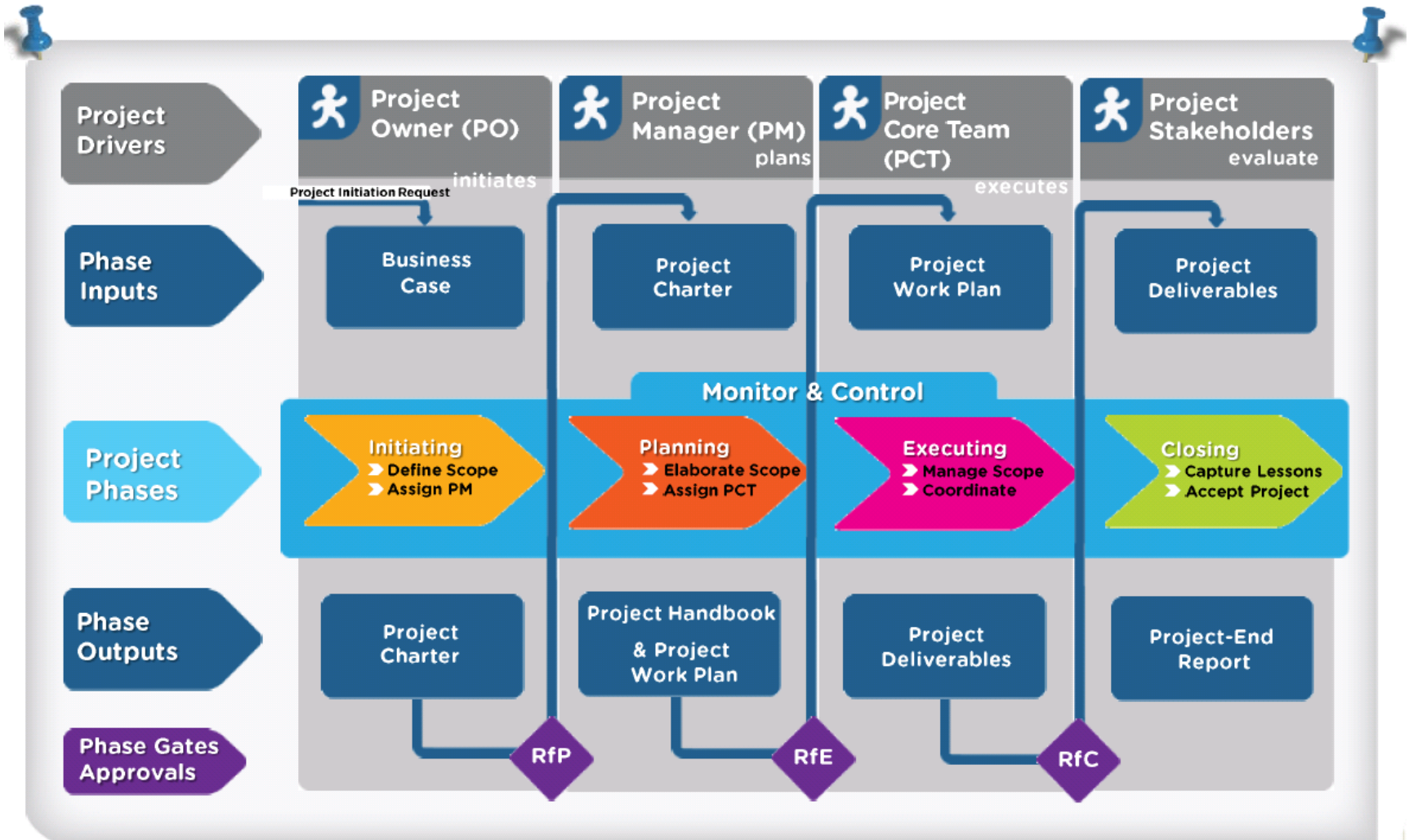
Brief History: Feasibility study

- *Following:*
 - **Multiannual European Action Plan on e-Justice**
 - **Working Party on e-Law (e-Justice) of the Council of the EU decision:**
 - **Feasibility study was conducted: Started in 10/2013 and completed in 8/2014.**
- *Scope:*
 - 1. Business: analysis of land registers in MSs**
 - 2. Technical: overview of potential architectures**
 - 3. Potential solutions to handling payments**
- *Presented at Working Party on 9/2014.*

Brief History

- *The Working Party discussed LRI in 1/2015 and decided to give the 'go ahead' to the EC.*
- *Thirteen MSs declared their interest to participate: AT, BE, BG, EE, ES, HR, IE, LT, NL, PT, SE, SI and UK.*
- *DG JUST prepared the Business Case for review by the internal EC IT Board*

EC Projects Phases



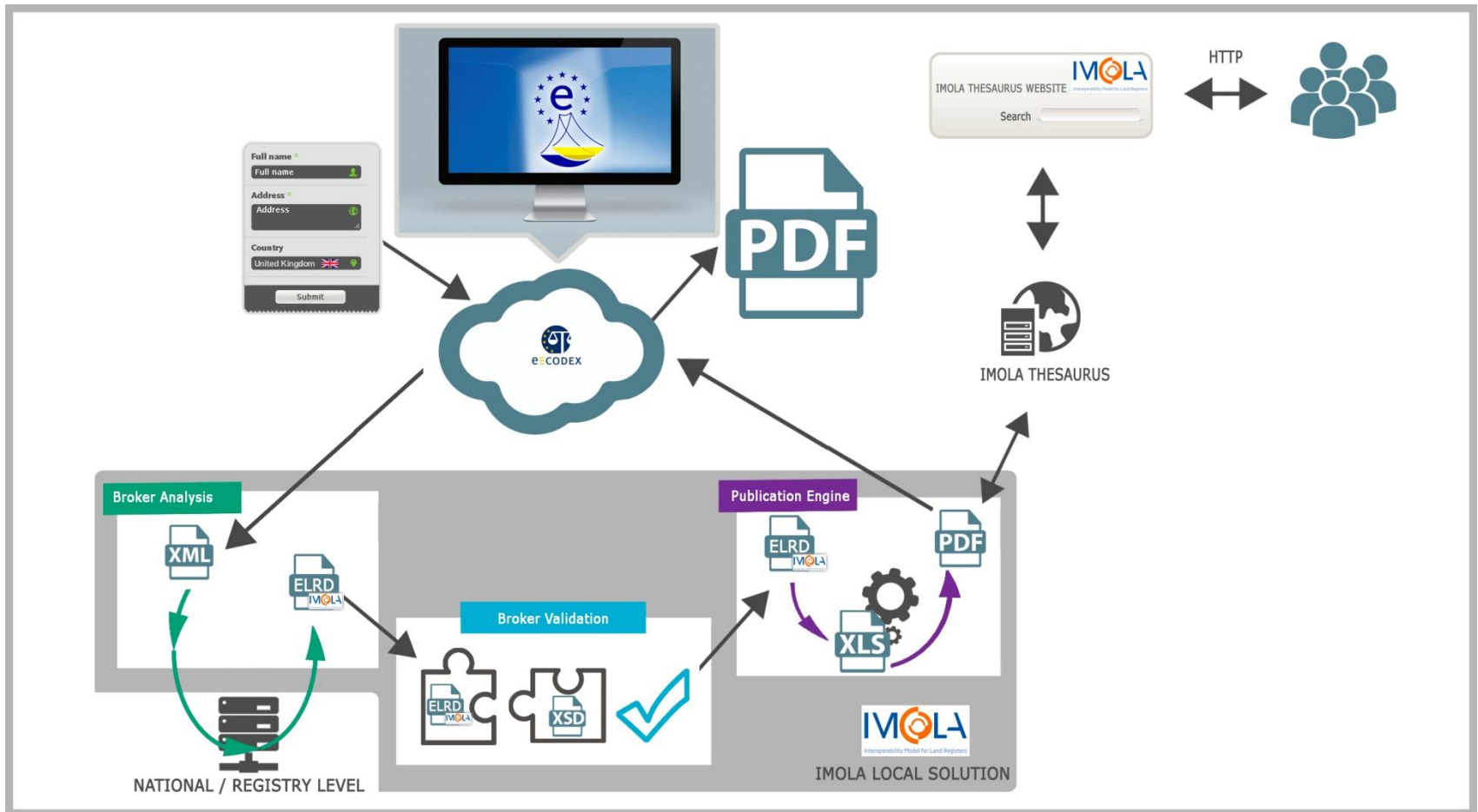
Brief History: Business Case

- *The Business Case presented at 10/2015 October EC-internal IT Board meeting.*
 - **'Positive with conditions' opinion.**
 - **Conditions referred to involvement of MSs and level of usage by users.**
- *Invited to submit the Project Charter to subsequent IT Board meeting*
 - **Project Charter: scope statement, high-level requirements, cost, time, governance, milestones, deliverables, project organisation.**
- *Project Charter presented at 1/2016 IT Board meeting*

Timing & Milestones

ID	Milestone Description	Target Delivery Date
1	End of <i>Initiating</i> phase: Business Case and Project Charter approved	Q4 2015 ✓
1.5	Signature of contract with winning consortium	Q1 2016
2	Delivery of initial mock-up prototype	Q2 2016
3	End of <i>Planning</i> phase: all project planning artefacts approved	Q3 2016
4	Delivery of application in TEST environment	Q1 2017
5	Deployment of application in ACCEPTANCE environment	Q1 2017
6	Acceptance of DIGIT test results (STRESS, VULNERABILITY)	Q2 2017
7	Finalisation of integration testing	Q2 2017
8	End of <i>Closing</i> phase: all deliverables are accepted	Q3 2017

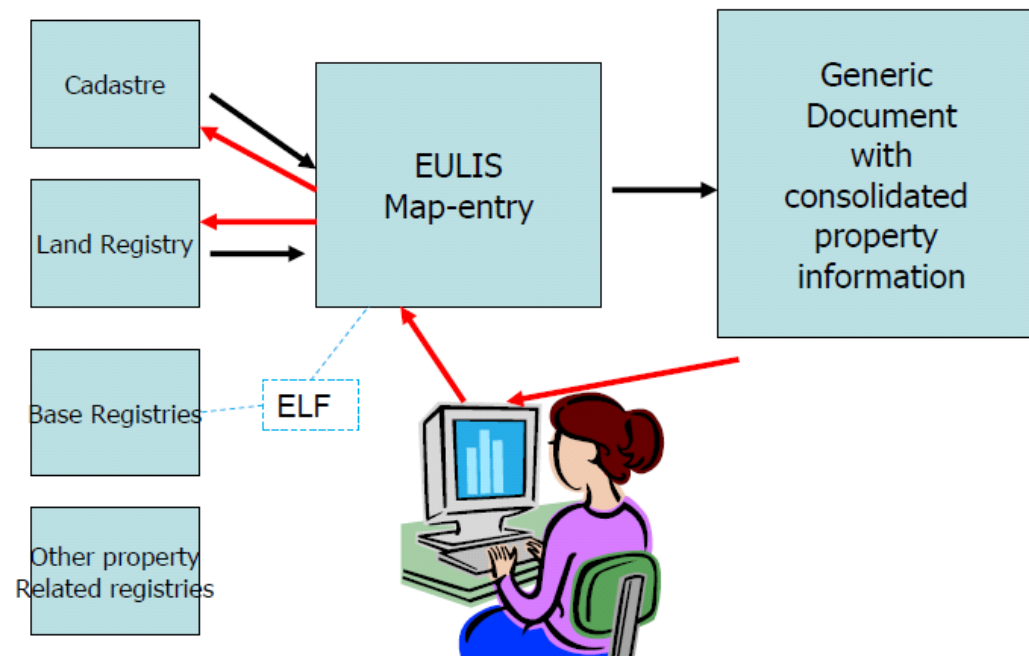
Relevant work: IMOLA



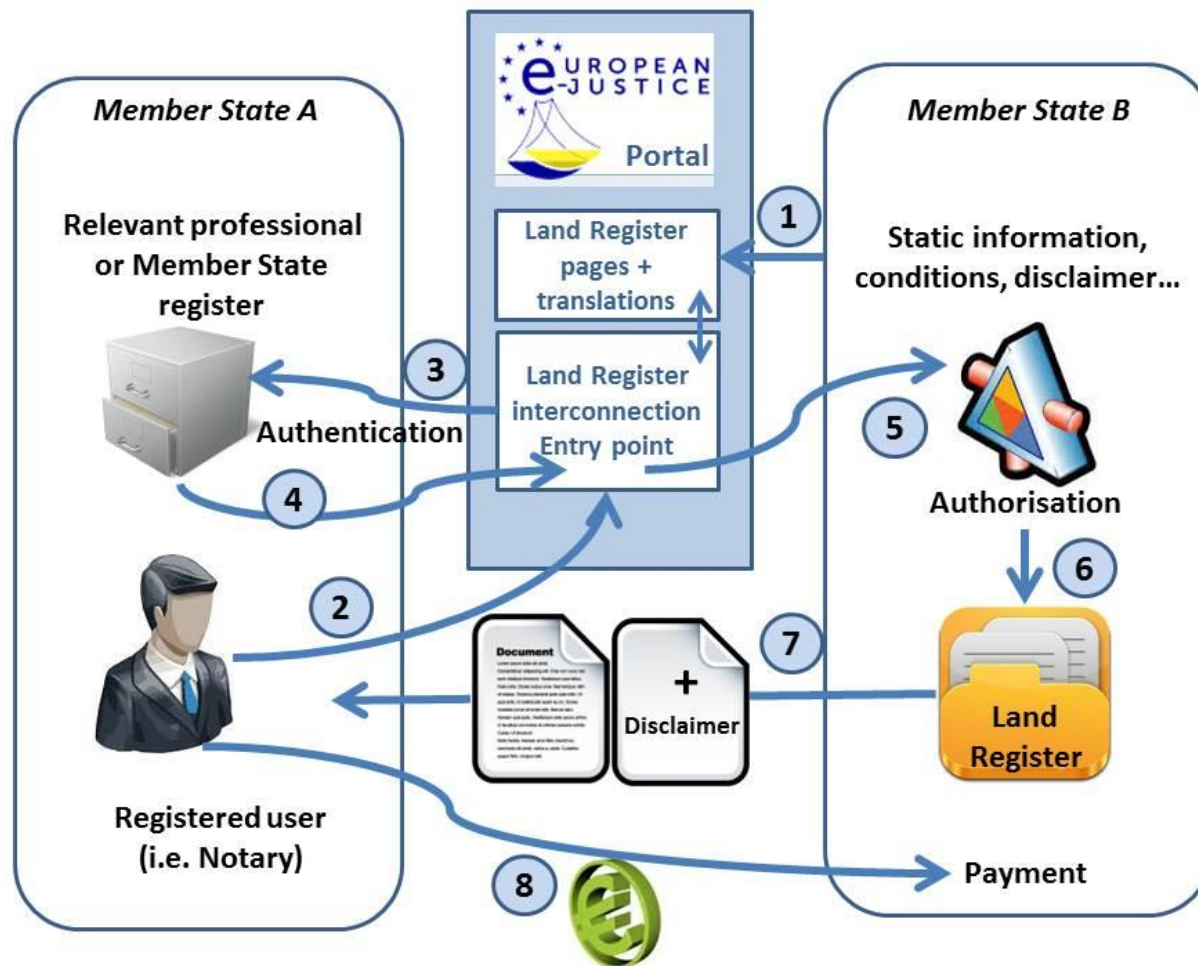
Relevant work: EULIS

Extend service (3/3)

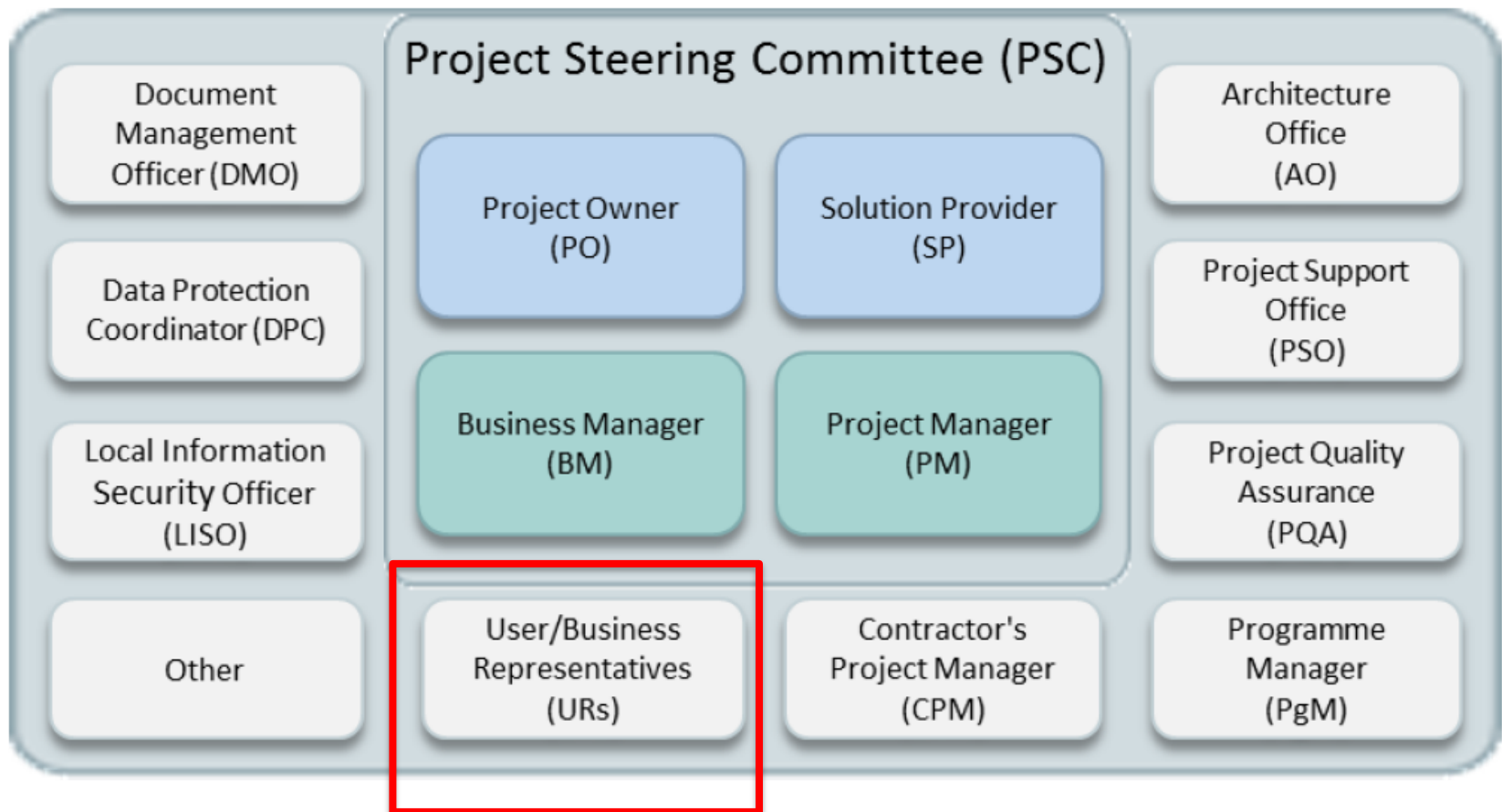
Future: Map entry facility



LRI: Conceptual Use Case



EC Projects: Governance



User/Business Representatives

- *28 EU **MSs**: institutions responsible for administering land-related data*
- ***Associations**: EULIS, ELRA, EuroGeographics, PCC, CLGE*
- ***DG JUST***
- ***JRC** (Joint Research Centre) – INSPIRE Directive*
- ***DIGIT** (hosting the Portal)*

Questions / Comments?

Thank you for your attention

European e-Justice Portal

<https://e-justice.europa.eu/>

