

Land Registers Interconnection

ELRA General Assembly, 1 December 2017

Gösta Petri
Gabriel Sima
European Commission, DG Justice and Consumers

1 December 2017

Context

The **Land Registers Interconnection (LRI)** project aims to provide a **single access point** within the **European e-Justice Portal** to the land registers of participating EU countries. This will address the current issues of **discrepancy, complexity and multitude** of land registration systems amongst Member States. Through this access point citizens and professionals will be able to query and retrieve relevant information via a **single, adaptive, multi-lingual interface**, in compliance with the national legal and technical capabilities.

State of play

- **Phase I available for integration testing with Member States in December 2017**
- **Phase II will feature an electronic payments system and reference information – Q3 2018**



Member State A

Relevant professional
or Member State
register



Authentication



Registered user
(i.e. Notary)

Member State B

Static information,
conditions, disclaimer...



Authorisation



Payment

Land Register
pages +
translations

Land Register
interconnection
Entry point

Document

+
Disclaimer

8



1

3

4

2

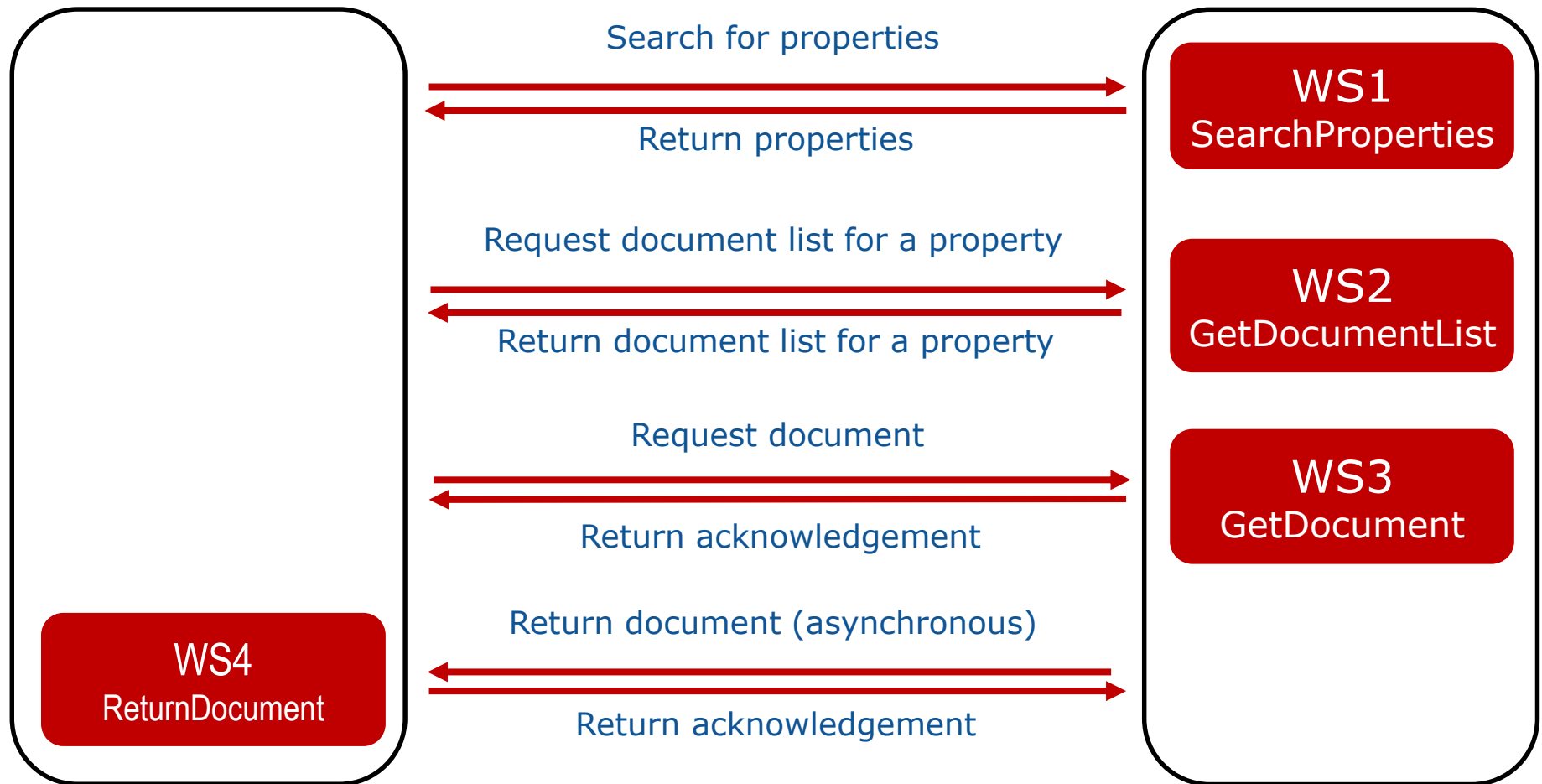
5

6

7

LRI

Land Register



Ongoing actions

- **Setting up a demo environment for Member States integration testing**
- **A contract is being signed with the contractor for integration support**
- **Working on a Tax Calculation Module that will allow implementing the payment system**

LRI Phase II

- **Work expected to start in Q3 2018**
- **Finalise payment solution for documents subject to a fee**
- **Implement change requests from Member States, and findings from Phase I**
- **Implement a circle of trust or an alternative cross-border authentication and authorisation mechanism**
- **Include the glossary from EULIS**

Next steps

- **Integrate the glossary provided by ELRA IMOLA II in 2019**
- **EuroGeographics: evaluation of European Location Services for LRI**
- **DIGIT ISA expressed interest in amending ELRD to use ISA Core Vocabularies and a unified style**
- **ISA Test Bed: create an LRI simulator to facilitate integration with Member States**

Grants for integration with LRI

- **Grants awarded to Austria and Estonia**
- **New grant available also in 2018, timing to be decided**
- **Priorities for grants for 2019 have not been decided yet**

Thank you