



Land Registers Interconnection

ELRA IMOLA II Kick-off Meeting

Gabriel Sima

European Commission, DG Justice and Consumers

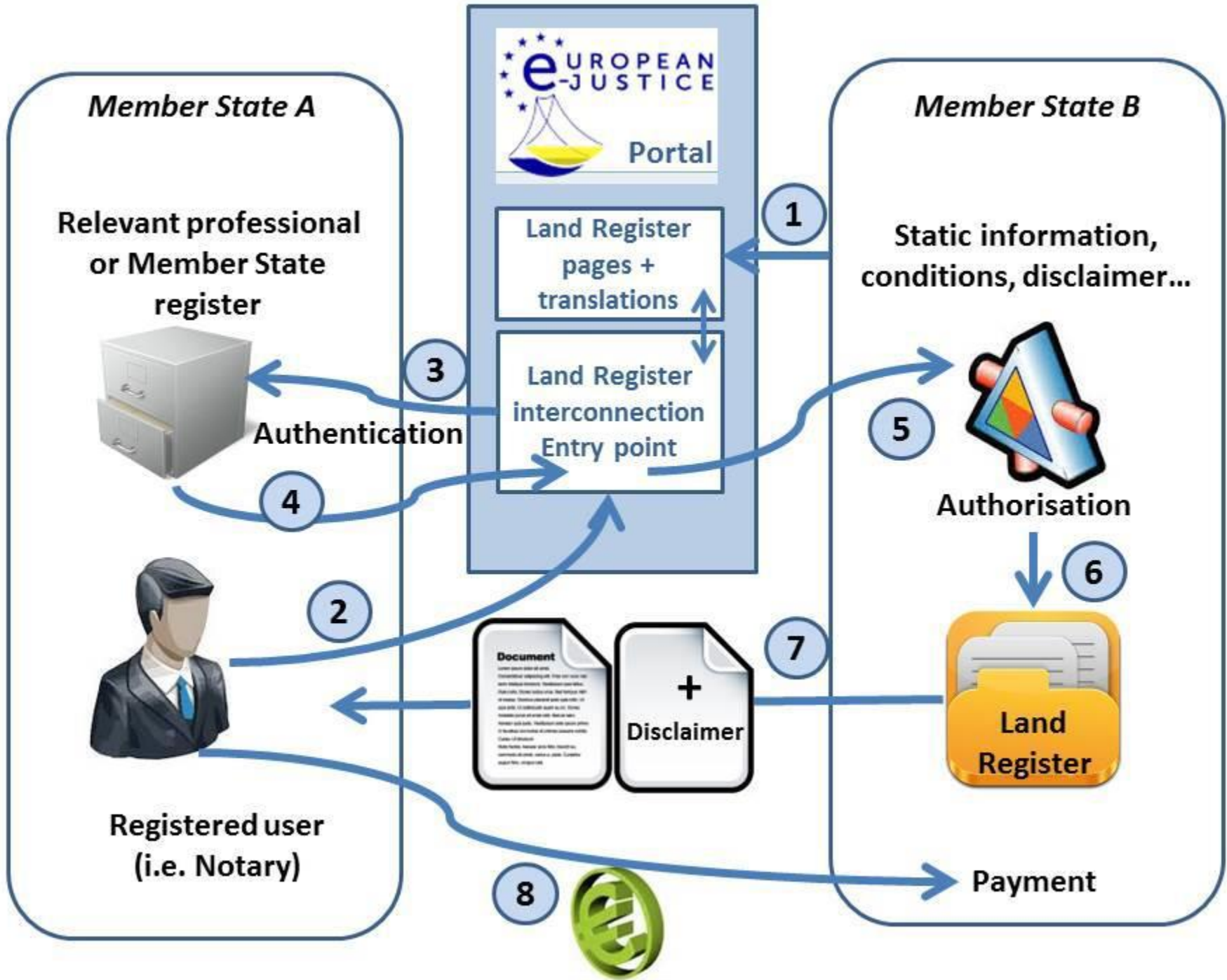
28 February 2018

Context

The Land Registers Interconnection (LRI) project aims to provide a single access point within the European e-Justice Portal to the land registers of participating EU countries. This will address the current issues of discrepancy, complexity and multitude of land registration systems amongst Member States. Through this access point citizens and professionals will be able to query and retrieve relevant information via a single, adaptive, multi-lingual interface, in compliance with the national legal and technical capabilities.

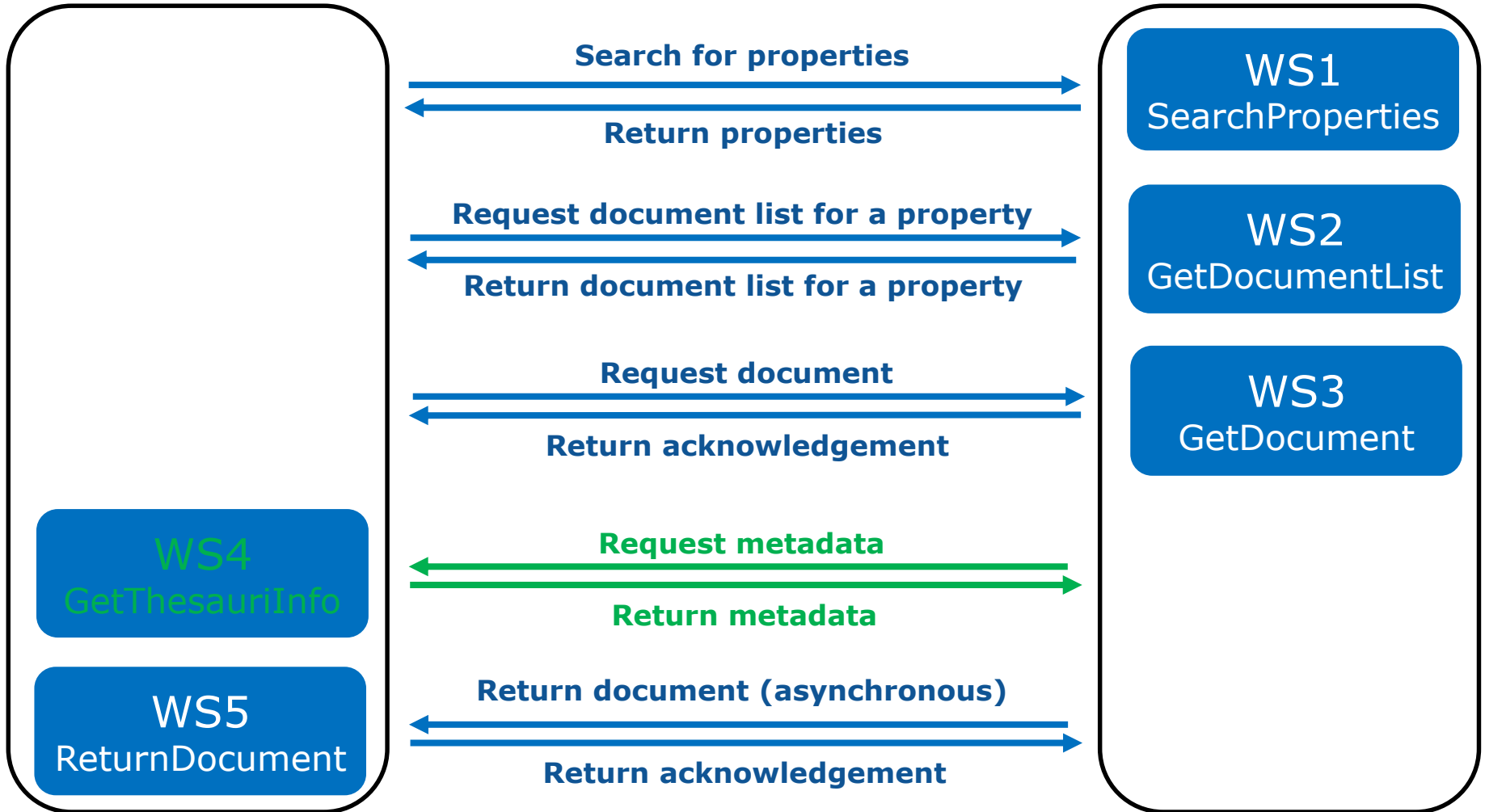
State of play

- **Phase I available for integration testing with Member States in December 2017**
- **Phase II will feature a circle of trust authorisation mechanism, and reference information – Q3 2018**
- **Implementation of an electronic payments system, pending contracting of a commercial payment provider**
- **Austria and Estonia are initiating interconnection work based on a European Commission grant**



LRI

Land Register



Ongoing actions

- **Tax Calculation Module that will allow implementing the payment system, for documents subject to a fee**
- **Selection of a Payment Services Provider**

LRI Phase II

- **Planned Q3 2018**
- **Circle of trust authorisation mechanism**
- **Static glossary of terms from EULIS**
- **Change requests from Member States**

Next steps

- **Integration work with Austria and Estonia**
- **Participate in defining IMOLA II specifications for compatibility with LRI**
- **Review of ELRD document by DIGIT ISA for interoperability with member state systems**
- **EuroGeographics: evaluation of European Location Services for LRI**
- **Implement the payment solution**

- **Integrating LRI and IMOLA II will add value to both initiatives and will encourage Member States to join**
- **DG Justice collaborates with ELRA to ensure interoperability of LRI and IMOLA II deliverables, and smooth transition to a possible Commission hosting of the IMOLA II service**
- **DG Justice will review the IMOLA II technical architecture and messaging model as the project progresses**
- **How could the benefits of IMOLA II be extended to those Land Registers which are not yet compatible with ELRD?**

Grants for integration with LRI

- **Grant awarded to Austria and Estonia**
- **New grant available in 2018, timing to be decided**
- **Priorities for grants for 2019 have not been decided yet**

Thank you