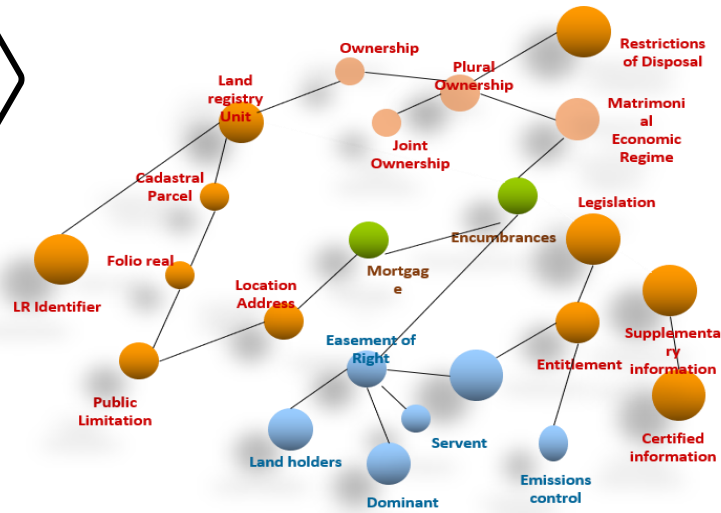
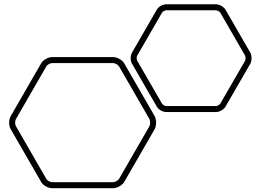




ELRD Environmental new pivots terms

Alignment with INSPIRE Directive

Jesus Camy –IMOLA III Project Manager-



IMOLA III PROJECT ENVIRONMENTAL PUBLIC LIMITATIONS





Home

SDI of Spain

INSPIRE in Spain

Web Services

Resources

Home /

Search geographical data and services

Select the catalog: IDEE, CODSI

Search.. (Example: river)

IDEE



Advanced search



SDI Geoportals



Viewer



Download websites



Documentation

Select

Highlight

04/02/2021

V Edición de los premios Pedro R. Muro-Medrano

02/12/2020

Disponibles las presentaciones de la reunión del GT de la IDEE

News

@IDEESpain
Boletín sobre IDEs
Blog IDEE



Workshops

Spain SDI meetings
Iberian Journey on SDI



**Connecting environmental
public limitations to
registered statutory
property régime**

**Providing an integrated and
harmonized Land Registry
Information**

WHY

**Preventing hidden charges:
the environmental rights of
citizens**

**Land Registry and
sustainability**

Spain IDEE/INSPIRE

INSPIRE ANNEX I
PROTECTED SITES
NATURA 2000 NETWORK



Only environmental limitations or restrictions affecting the right of disposal or use of proprietorship

Others public national restrictions and planning

WHAT

INSPIRE environmental spatial data information

Metadata to assure the quality of environmental Information

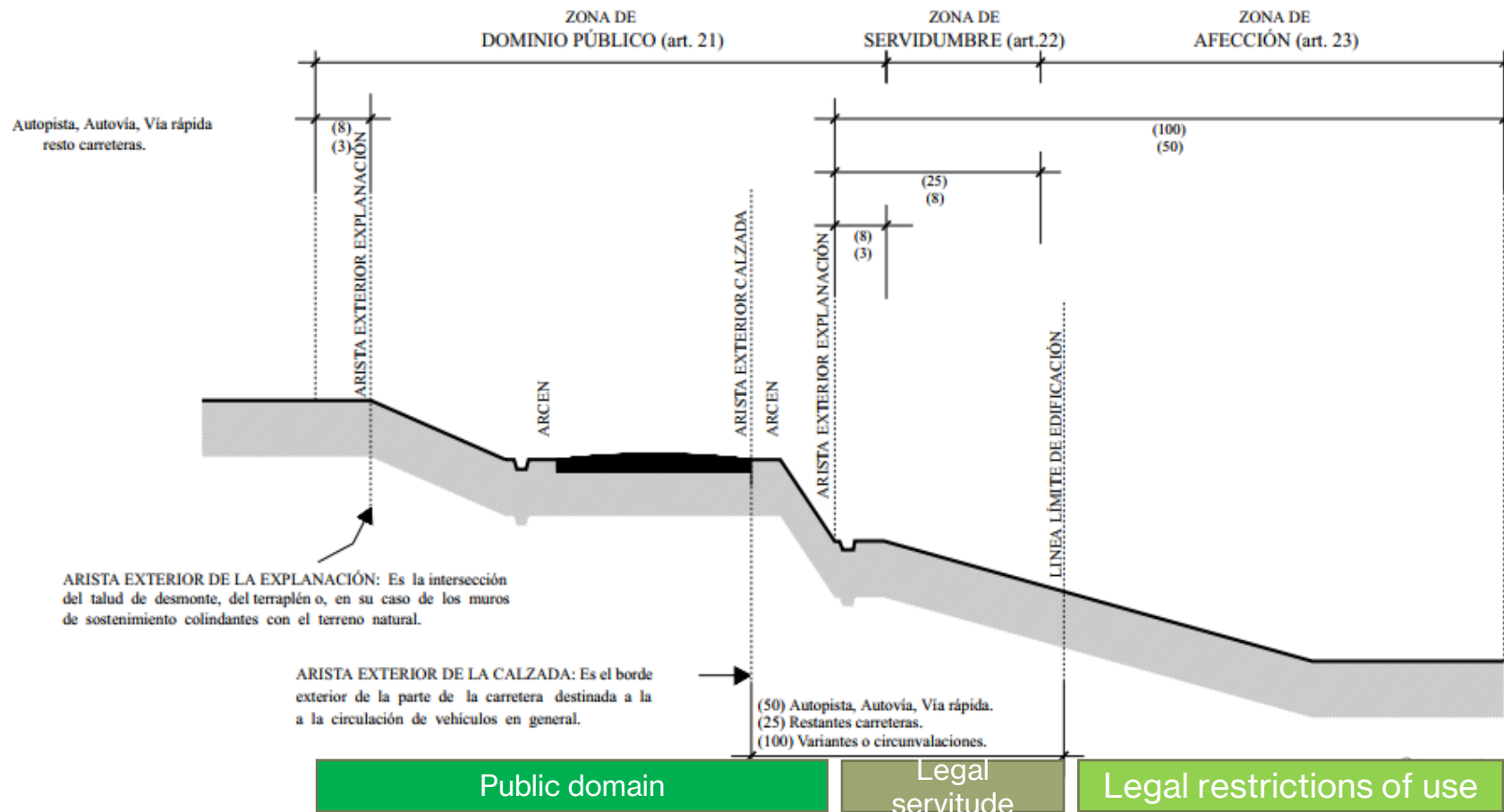


Spain IDEE/INSPIRE

- INSPIRE ANNEX I
- PROTECTED SITES
- NATURA 2000 NETWORK
- NATURAL PARKS
- CADASTRAL PARCEL
- LAND REGISTRY PROPERTY
- (Overlapping layers)



Suelo Afectado al Sistema de Espacios Libres e Incluido en Espacios Naturales Protegidos



Transport Networks: restrictions schema according to roads national law in Spain

Source: CORPME



Land Registry property affected by legal restrictions according to roads national law

Source: CORPME



Land Registry property affected by legal restrictions according to roads national law

Source: CORPME

Spain IDEE/INSPIRE

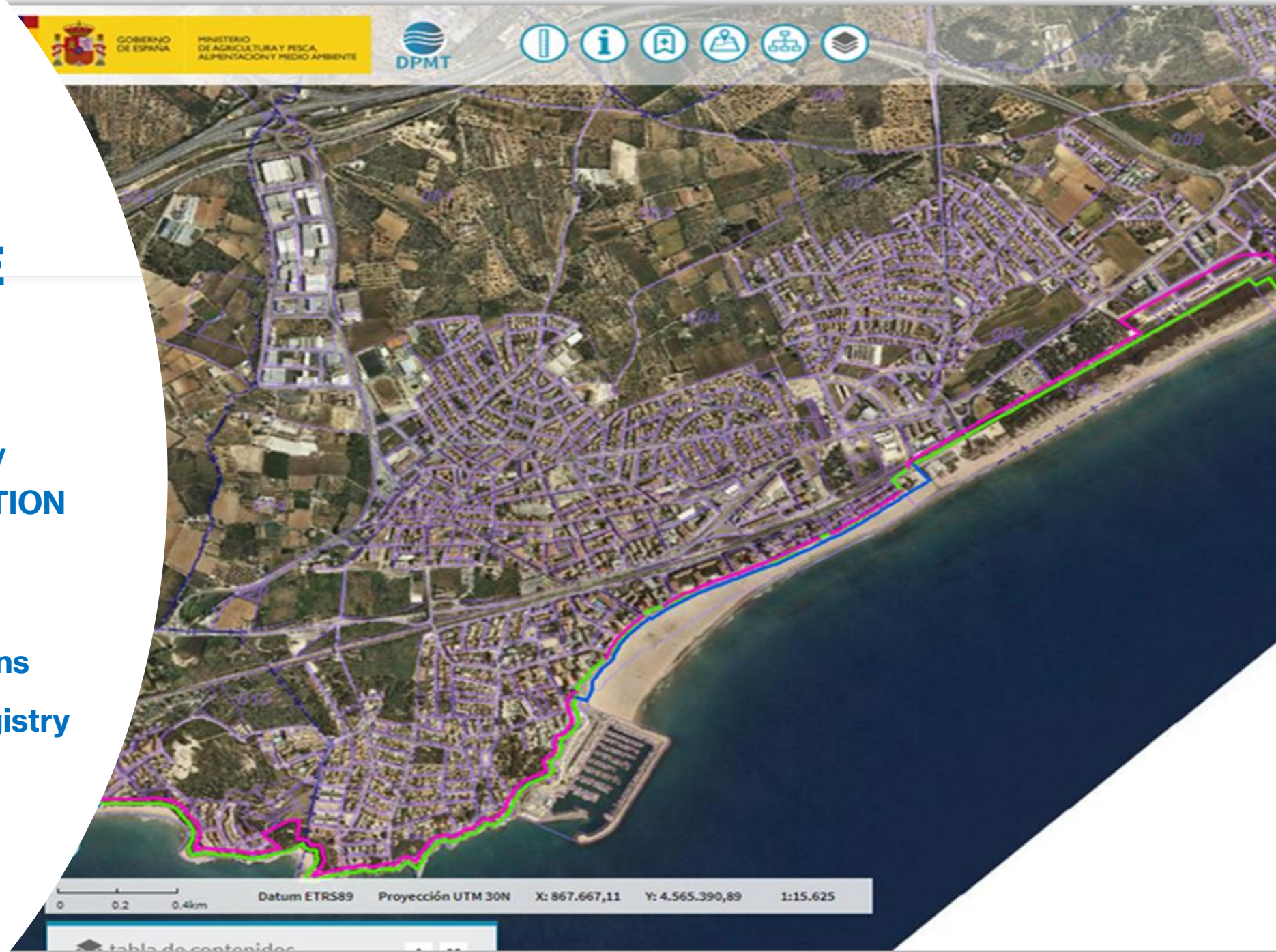
INSPIRE ANNEX III
AREA MANAGEMENT/
RESTRICTIONS/REGULATION
ZONES

Coastal Shoreline

Public Domain Limitations

Cadastral parcel/Land Registry
Property/DPMT linear

(overlapping)

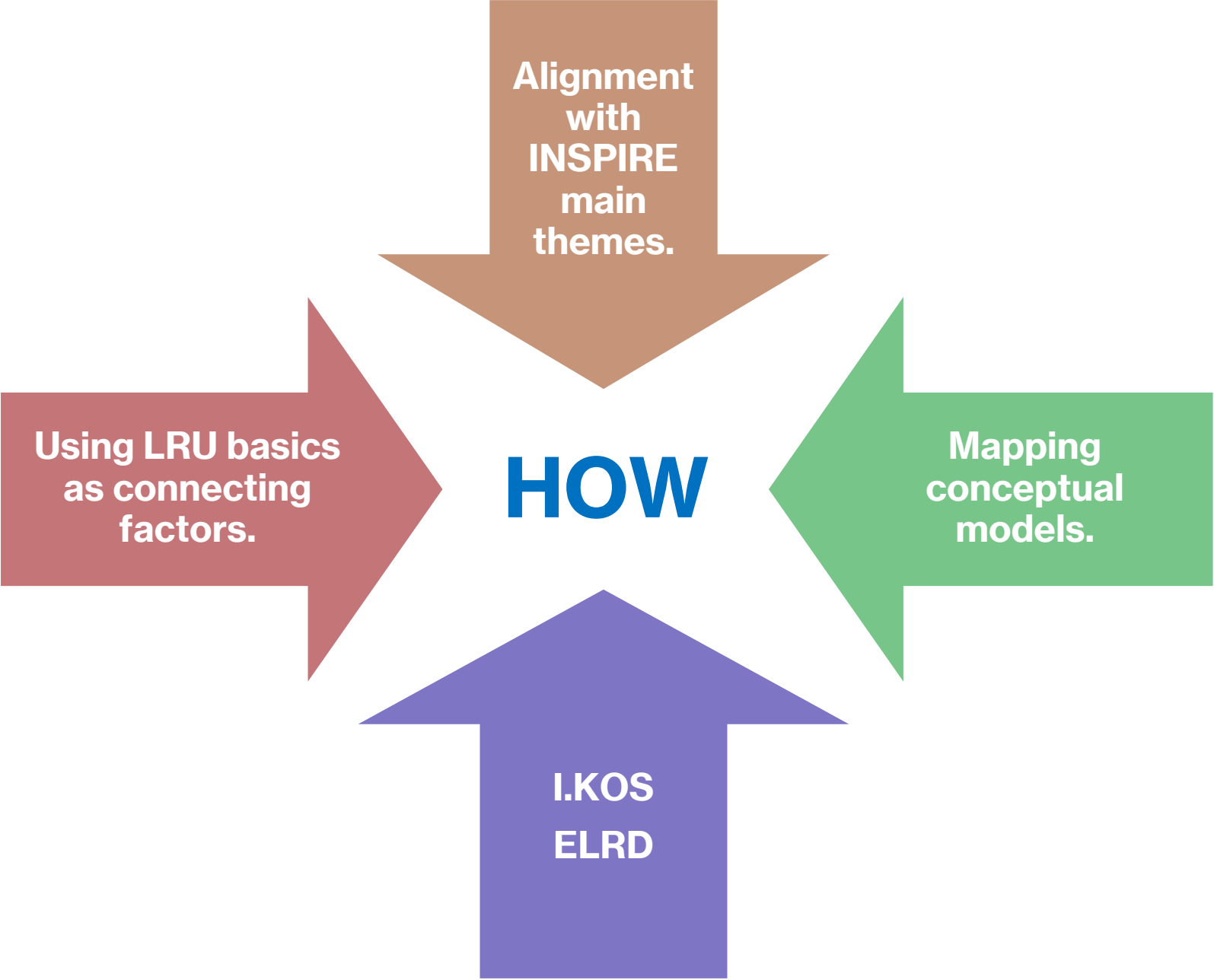


Spain IDEE/INSPIRE

INSPIRE ANNEX III AREA MANAGEMENT/ RESTRICTIONS/REGULATION ZONES

- Coastal Shoreline
- Public Domain Limitations
- Cadastral parcel/Land
Registry Property/DPMT linear
(overlapping)





ANNEX: 1



Addresses



Cadastral parcels



Geographical grid systems



Hydrography



Transport networks



Administrative units



Coordinate reference systems



Geographical names



Protected sites

ANNEX: 2



Elevation



Land cover



Geology



Orthoimagery

ANNEX: 3

INSPIRE DIRECTIVE MAIN THEMES



[Agricultural and aquaculture facilities](#)



[Atmospheric conditions](#)



[Buildings](#)



[Environmental monitoring Facilities](#)



[Human health and safety](#)



[Meteorological geographical features](#)



[Natural risk zones](#)



[Population distribution and demography](#)



[Sea regions](#)



[Species distribution](#)



[Utility and governmental services](#)



[Area management / restriction / regulation zones & reporting units](#)



[Bio-geographical regions](#)



[Energy Resources](#)



[Habitats and biotopes](#)



[Land use](#)



[Mineral Resources](#)



[Oceanographic geographical features](#)



[Production and industrial facilities](#)

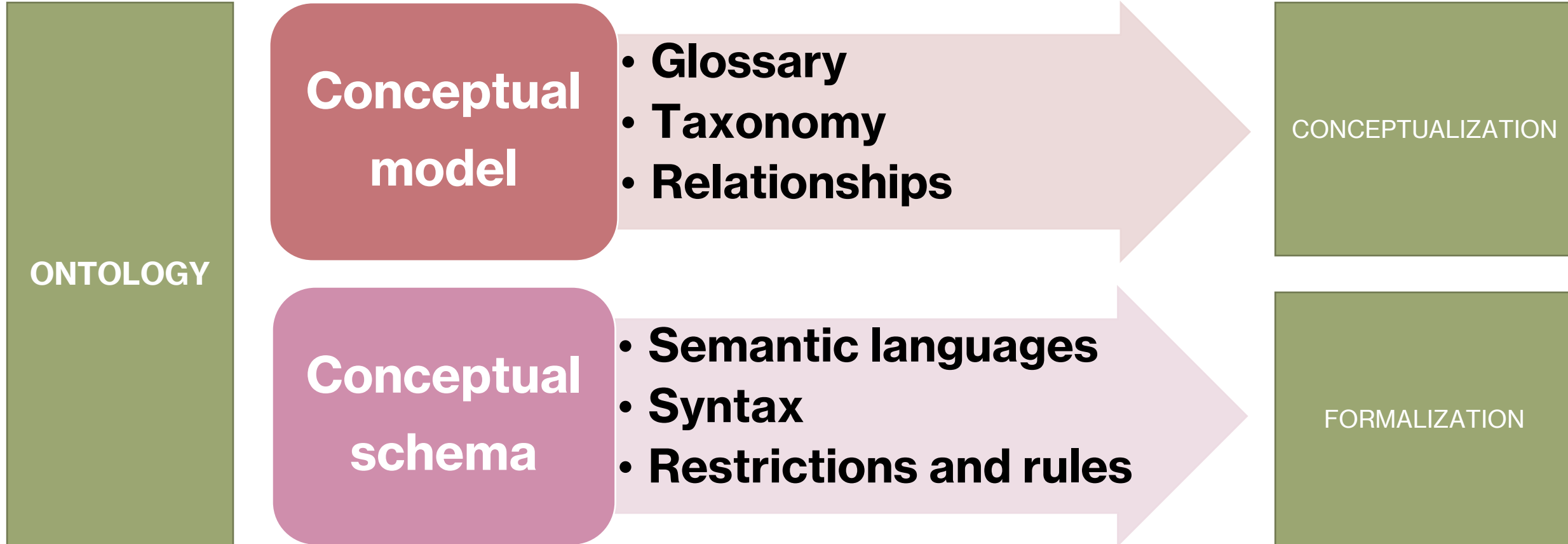


[Soil](#)

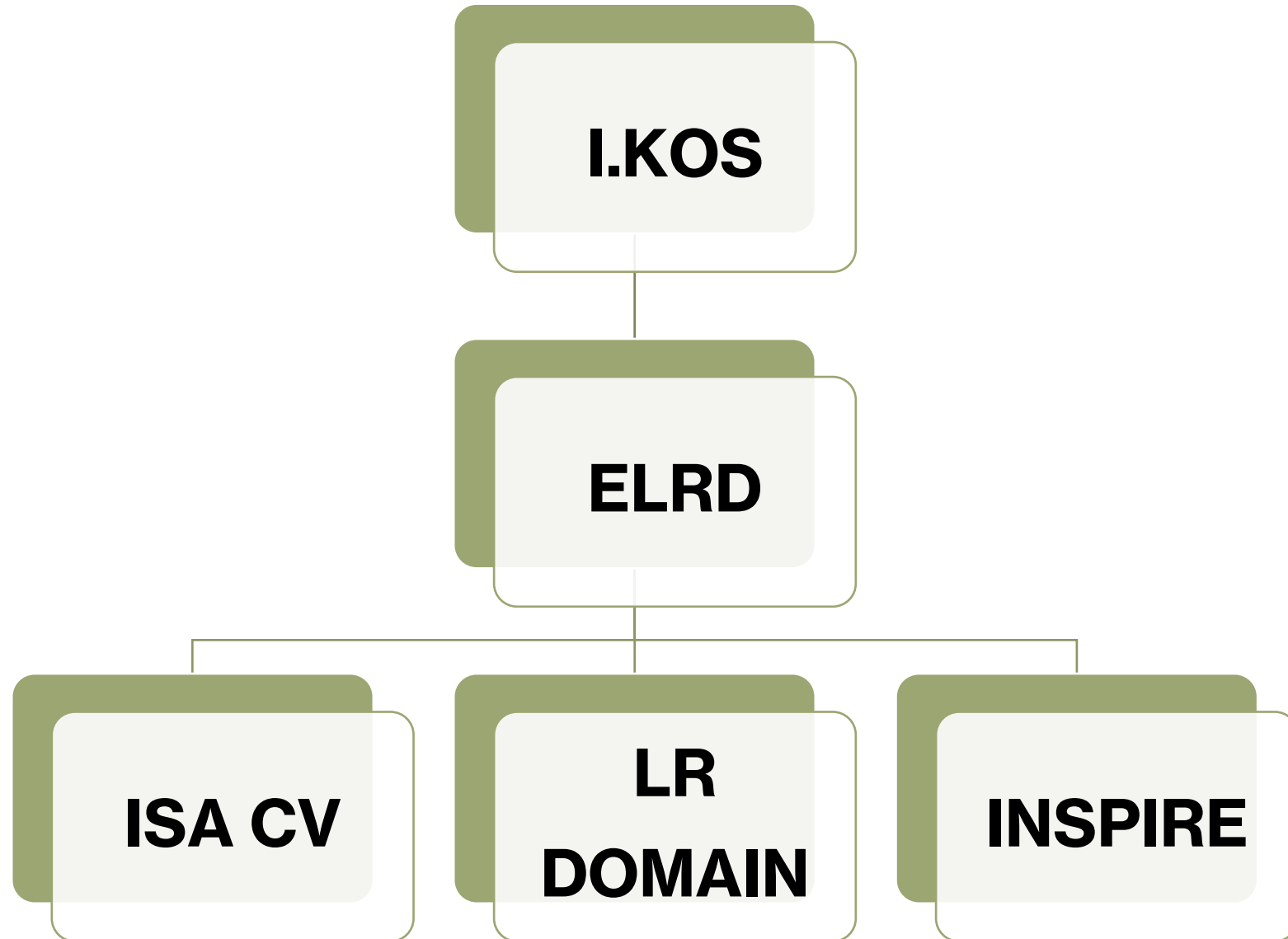


[Statistical units](#)

I.KOS/INSPIRE MAPPING BOTH CONCEPTUAL MODELS



REUSING EUROPEAN SEMANTIC MAIN BUILDING BLOCS



ELRD: Land Registry Unit Basics as connecting factor

LRU identifier

LR property

Cadastral parcel

European LR identifier

INSPIRE identifier

LRU location

ISA core vocabulary

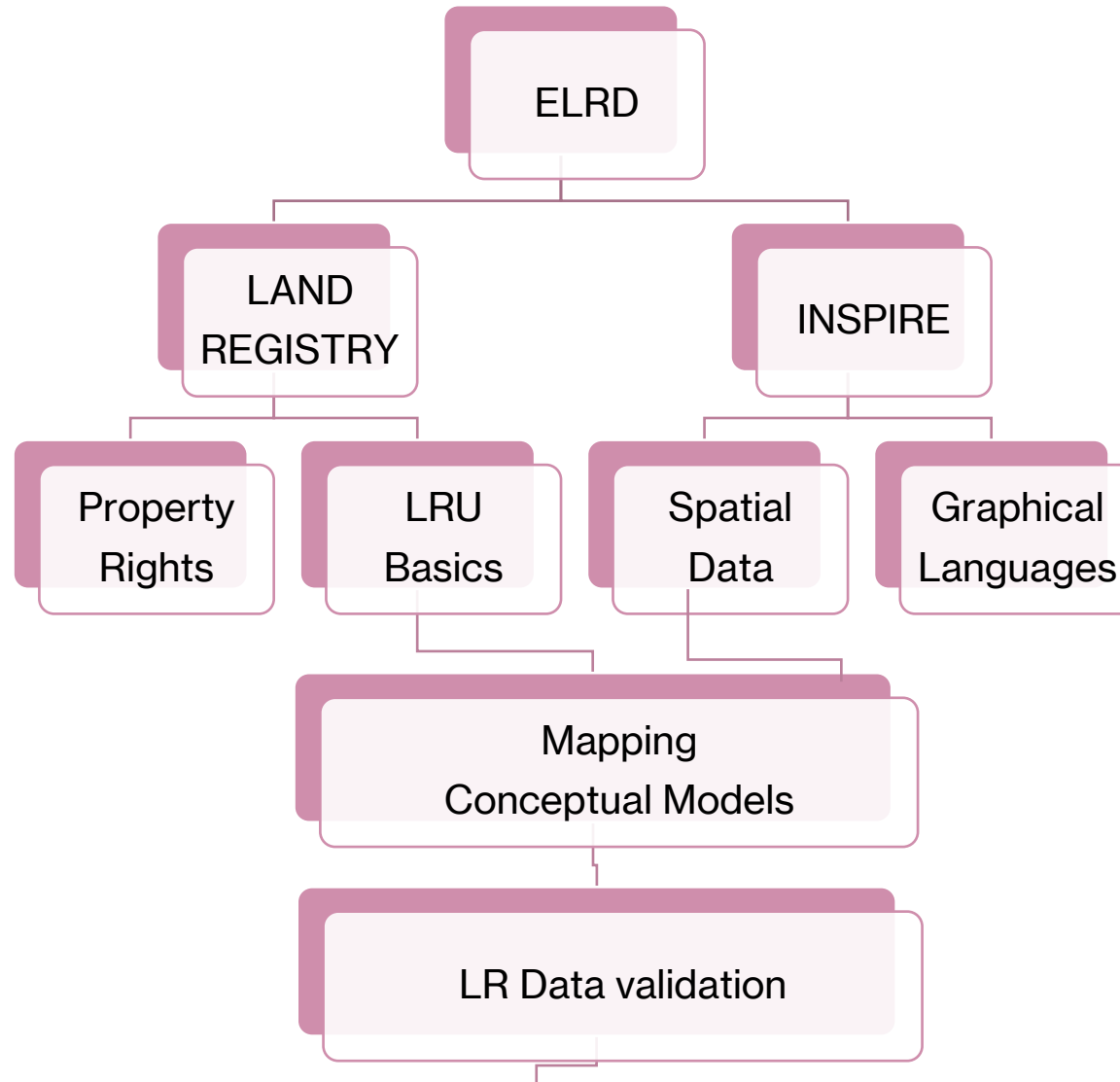
Geographic name

Orthoimaginery

Building geometry 3D



Connecting property rights and spatial data



LR Information connected to INSPIRE Environmental and Public Limitations

Preliminary approach to LR graphic information built upon mapping INSPIRE spatial data

The screenshot displays a GIS application interface with several key components:

- Map View:** Shows an aerial orthophoto with overlaid vector layers. A central parcel is highlighted in green with a pink border and labeled 'GR-30004-AY'. A cadastral reference '18022001200363' is visible on the parcel. Other parcels are labeled 'GR-30004-AY'.
- Left Panel (Layers):** Lists various vector and image layers. Under 'Capas Vectoriales', 'Fincas' is active. Under 'Imágenes', 'Ortofotos' is active. A 'Panel de Coordenadas' at the bottom left shows the datum as ETRS89 and coordinates: Latitud: 37° 6' 11.87" N, Longitud: 3° 31' 57.19" W, Huso UTM: 30, Coordenada X: 452.679.51 m, Coordenada Y: 4.106.464.15 m, Nivel: 19.
- Right Panel (Metadata):**
 - Metadatos de la operación en curso:** A table showing metadata for the current operation.
 - Metadatos heredados:** A table showing inherited metadata for the selected layer.
 - Capas usadas en la digitalización:** A table listing the layers used during digitization.
 - Metadatos no heredados:** A table showing non-inherited metadata, including a comparison between cadastral and digitized data.

Metadatos heredados	Tipo	Valor
LIC	Código	ES6140004
	Nombre	SIERRA NEVADA
	Sup. Intersección (m ²)	5.197,10
ZEPA	Código	SIERRA NEVADA
	Nombre	ES6140004
	Sup. Intersección (m ²)	5.197,10
PNOA	HMTNS0	1026
	Fecha	2008-09-01
	Resolución	0,5
	Sup. Intersección (m ²)	10.274,62
PARCELAS	Ref Cat	18135A01100055
	Tipo	R
	Fecha Alta	14/09/2010
	Sup. Intersección (m ²)	10.130,61

Capa	Tipo	Url	Observaciones
Montes Públicos	Raster	http://www.juntadeandalucia.es/medioambiente/mapwms/REDIAM_Montes_Publicos_Andalucia	
RedNatura2000	Raster	http://www.juntadeandalucia.es/medioambiente/mapwms/REDIAM_RENPA	
eenpp	Raster	http://www.juntadeandalucia.es/medioambiente/mapwms/REDIAM_Espacios_Naturales_Protectidos	

Pregunta	Respuesta
Referencia catastral en el Registro	Coincide con la de una parcela
Calle/paraje en el Registro	Coincide
Número de gobierno en el Registro	Coincide
Línderos en el Registro	Coinciden
Planimetría en el Registro	Finca localizada según planimetría
Coincide elemento singularizador (nombre, lugar conocido, nº de parcela, ...)	Catastro
Superficie en el Registro	Coincide ±10%
Perímetro identificado	Coincide con parcelario y con ortofoto

**EU strategic
decision**

**LRI national
systems integration**

WHEN

**ELRD broker a
flexible interface**

ELRD test validation



LRI Collaboration Model

Thank you for your attention!!

