



Portuguese vision of land registry interconnection

Project Outcomes Shaping The Future



Funded by
the Justice Programme
of the European Union



CONCLUSIONS / CHALLENGES - TARGET

Carrying Out

- New ways to work
- On line – video meetings
- More interactions
- Document sharing
- Fewer topics per meeting
- More interactions

Covid 19



CONCLUSIONS / CHALLENGES - TARGET



National Goal

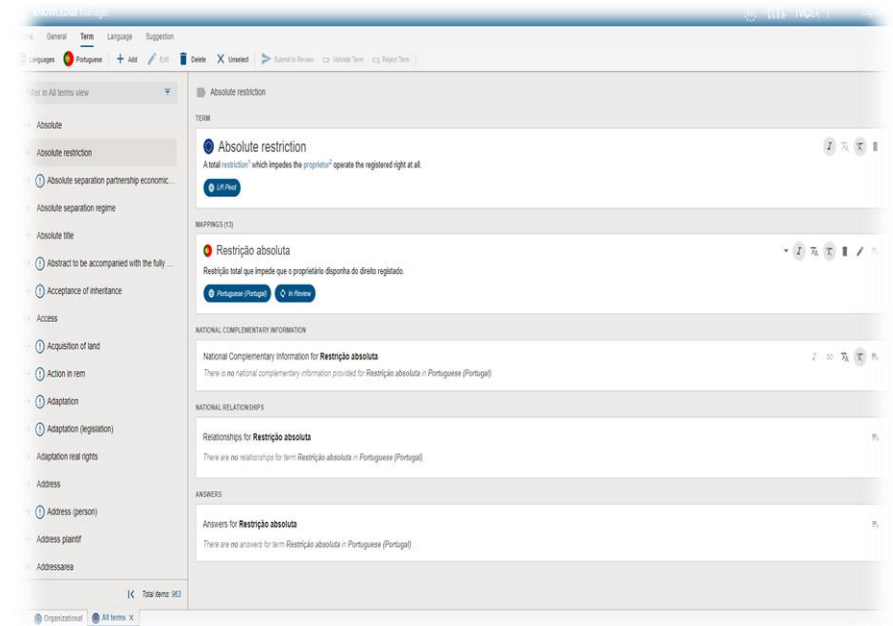


- More than 400 terms in Portuguese language.
- Need to translate new pivot terms, create relationships, synonyms and identify formants.

CONCLUSIONS / CHALLENGES - TOOLS

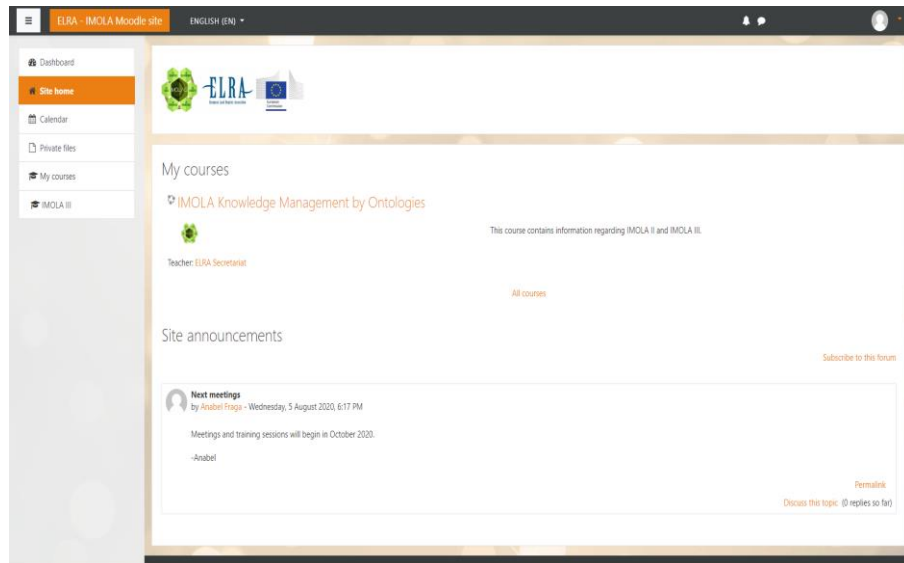
Knowledge Manager

- very user friendly
- enhanced user experience in the quest for the meaning of land registry terms,
- providing semantics,
- easy navigation views,
- definitions,
- relationships,
- and properties for concepts,
- besides new functionalities like statistics.



CONCLUSIONS / CHALLENGES - TOOLS

Moodle



- e-learning platform
- supported with efficiency the project execution and collaboration.
- sharing documents and video record of the training sessions
- feedback on every survey



CONCLUSIONS / CHALLENGES – PIVOT TERMS

Anti-Money Laundering (AML)



Environmental facts related to the land unit

CONCLUSIONS / CHALLENGES – PIVOT TERMS



Comparative Land Register Law – Legal Formants

Importance and added value of properties like legal formants.

In our legal tradition the following three main sources to improve the quality of the information are:

- Legislation;
- Case Law;
- Doctrine.



CONCLUSIONS / CHALLENGES – PIVOT TERMS

Other Factors Stressing Real Estate Market

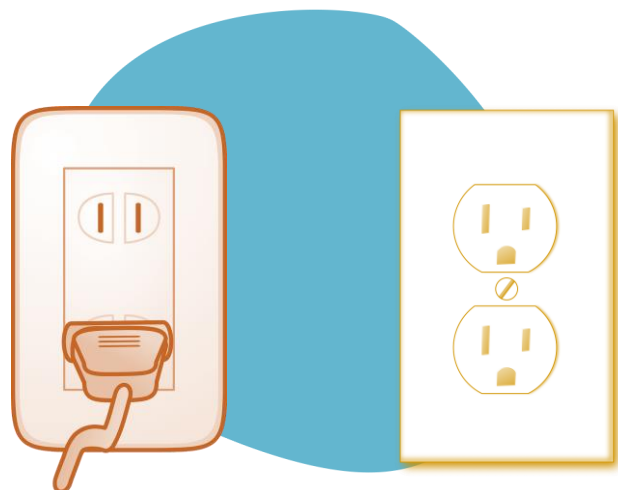
- Asymmetric information, transparency and the protection of personal data.
- Is it wiser and relevant advertising a wider set of information that influences the purchase decision.



CONCLUSIONS / CHALLENGES - INTEROPERABILITY



Exchange of Data



Major issues result from technological heterogeneity.

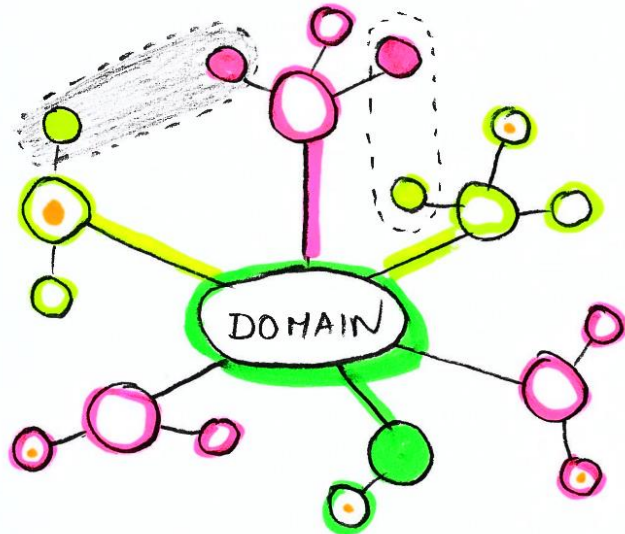
- Different hardware platforms, operating systems, programming languages, data sources, protocols,



CONCLUSIONS / CHALLENGES - INTEROPERABILITY

Use of Data

- Priority to harmonize data and knowledge settled in a ontology approach.



Semantic and Syntactic

- Assuring information is exchanged through a predefined data schema and format and have the same meaning for everyone.
- Our motivation is the belief that information is only what is understood.



CONCLUSIONS / CHALLENGES - INTEROPERABILITY

Legal, Organizational and Technological

- strategic goal
- necessary funds,
- governance model,
- policies and regulations

- physical and logical technical infrastructure





CONCLUSIONS / CHALLENGES – USE CASE

Land Register Plot Information Via ELRD



- Important to evaluate the feasibility of retrieving national data using the ELRD template before real implementation of the service.
- Also allowed to find some limitations and gaps.

CONCLUSIONS / CHALLENGES – INTEROPERABILITY KEY FACTOR

SIMPLIFICATION / STANDARDIZATION

- Elimination of unnecessary and redundant data.
- Whenever possible transform private data sets into regional or international standards in order to ease the conformity of the information.
- Consolidation of data requirements and respective representation formats.

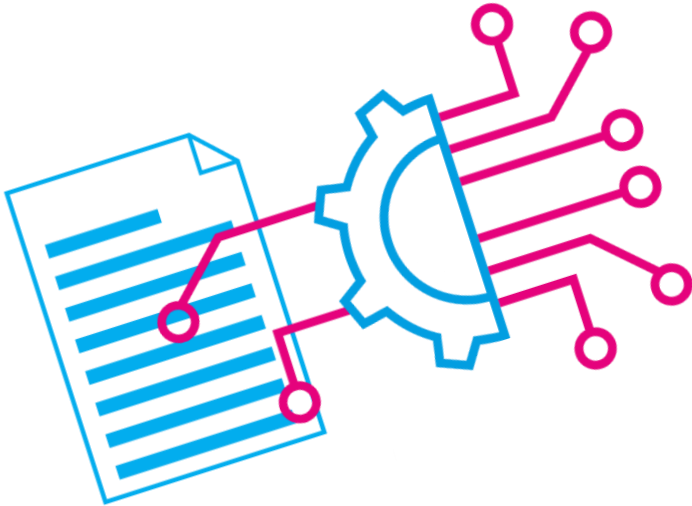


CONCLUSIONS / CHALLENGES – INTEROPERABILITY KEY FACTOR



HARMONIZATION

- Combine information from different data sources in such a coherent way that all users, who are consuming land register information from different Member States, shall have a unified view and complete comprehension.
- Strategy towards harmonization is to match as many concepts as possible to the existing and common used land register ontology and to the European Land Register Document (ELRD) structure and hierarchy of those elements.



CONCLUSIONS / CHALLENGES – INTEROPERABILITY KEY FACTOR

INTEGRATION

Implementation of a single point of access to obtain intelligible land register information from the different systems in the e-Justice portal.

With the Land Register Interconnection (LRI) services is possible to deal with topics like authentication / authorization of citizens and legal professionals, search forms and available query fields, payment of fees for the information and document retrieval.





CONCLUSIONS / CHALLENGES – FUTURE MEASURES

Next Steps at National Level



- Unique land unit identifier;
- Compliance of the retrieved information with the ELRD, particularly with Section B solving issues related to proprietorship identification;
- Important role of the cadaster and geographic information systems to have multiple layers of information;
- New land register information system designed for better data quality (accuracy, consistency, validity, uniqueness) and interoperability;
- Harmonization of land unit location used for register and tax purposes;
- Open data agenda.

THANK YOU!



irn.justica.gov.pt



Funded by
the Justice Programme
of the European Union

