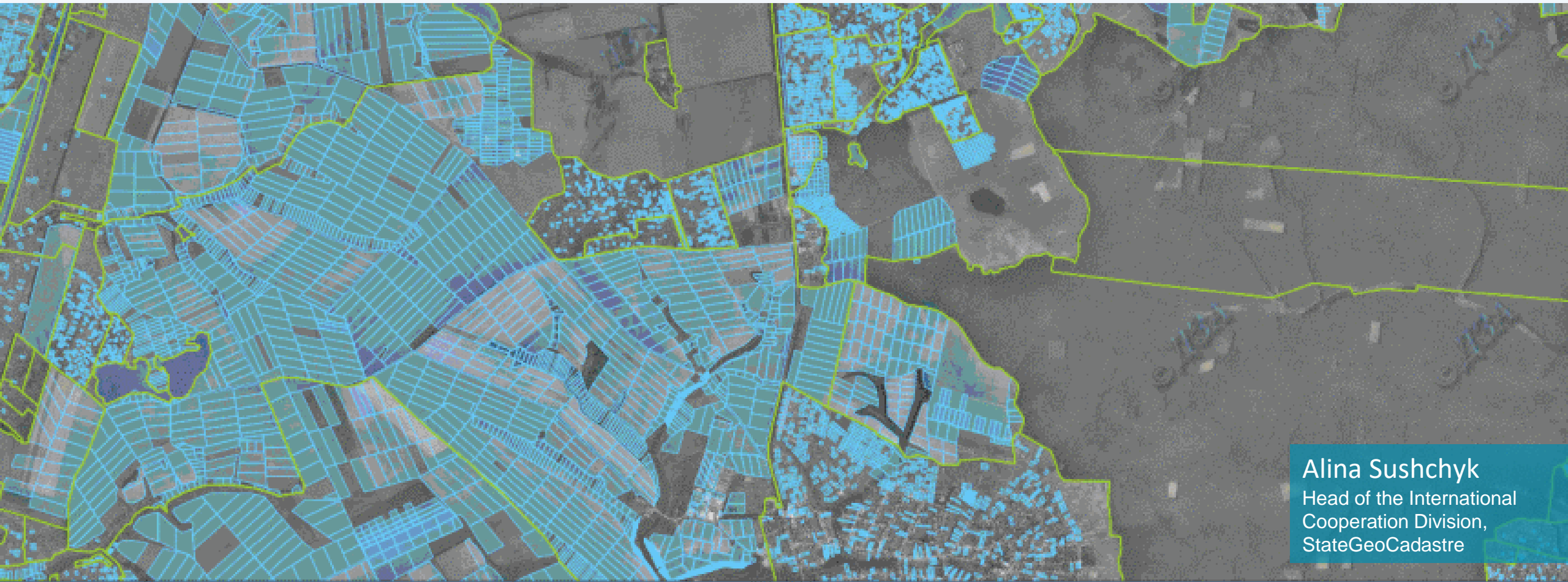


STATE LAND CADASTRE IN UKRAINE



Alina Sushchuk
Head of the International
Cooperation Division,
StateGeoCadastre

Whole area **603 549 km²**

5.7% of the European territory

~ 20 % (123.2 km²)
is occupied by russia

~ 5000 + missile rockets during
456 days of military aggression of russia



KEY DOMAINS OF RESPONSIBILITY:



State Land Cadastre



Topography, geodesy, mapping



Spatial Data Infrastructure



Land use & protection

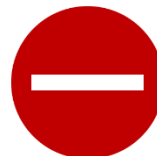


Control for land use



Administrative services

- ❑ State Land Cadastre is “official geographic information data system of the lands situated within the state border of Ukraine, their intended purpose, use restrictions, data of the quantitative and qualitative characteristics of the lands, their assessment, land distribution between owners and users”
- ❑ Since January 1st 2013 the Public Cadastre Map of Ukraine is accessible online
- ❑ The Martial Law from February 2022
- ❑ Resolution of the Cabinet of Ministers of Ukraine on the maintenance and functioning of the State Land Cadastre under martial law dated March 12, 2022 No. 263:

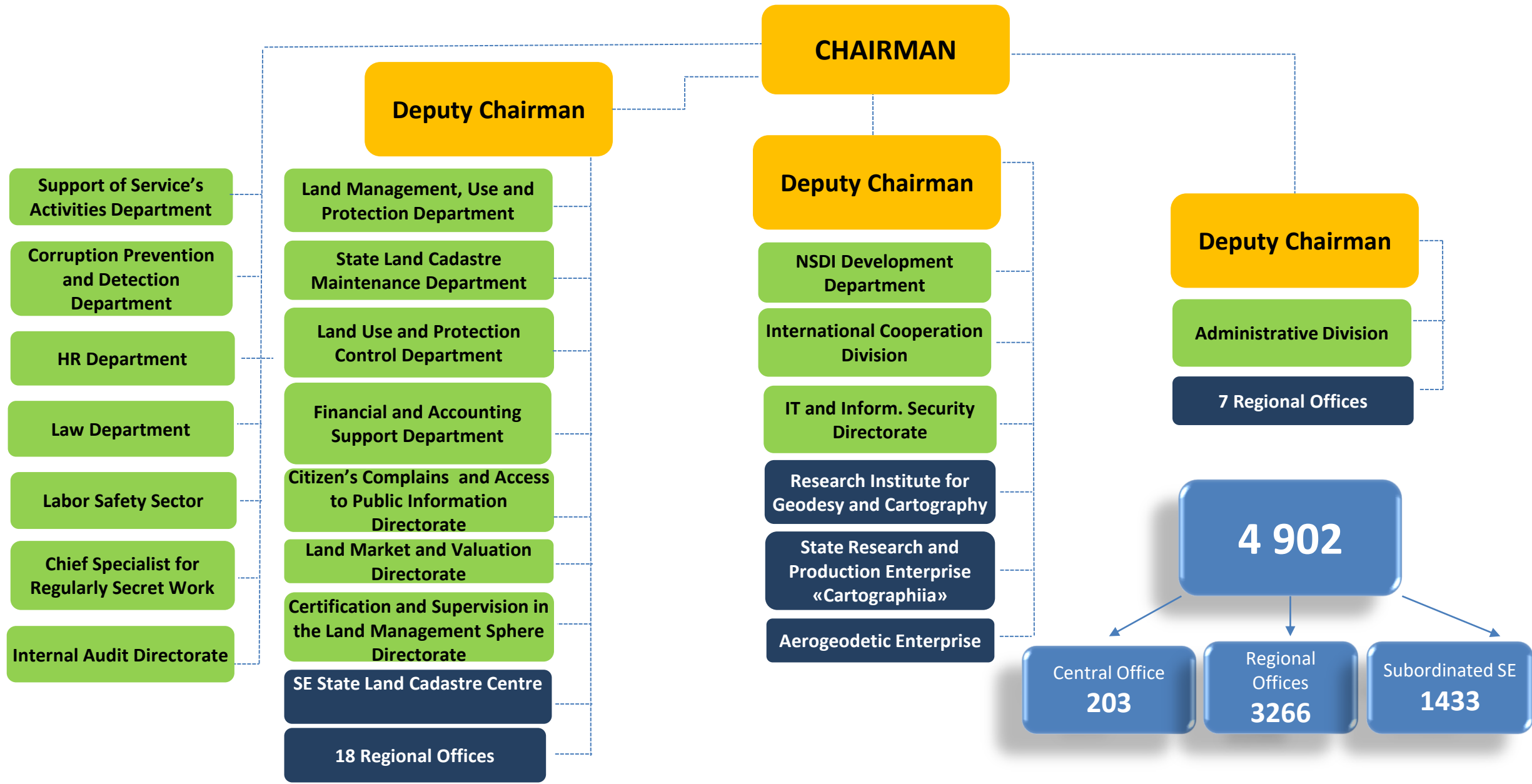


Public Cadastre Map closed for the open access



NSDI Pilot Geoportal closed for open access

StateGeoCadastr Structure



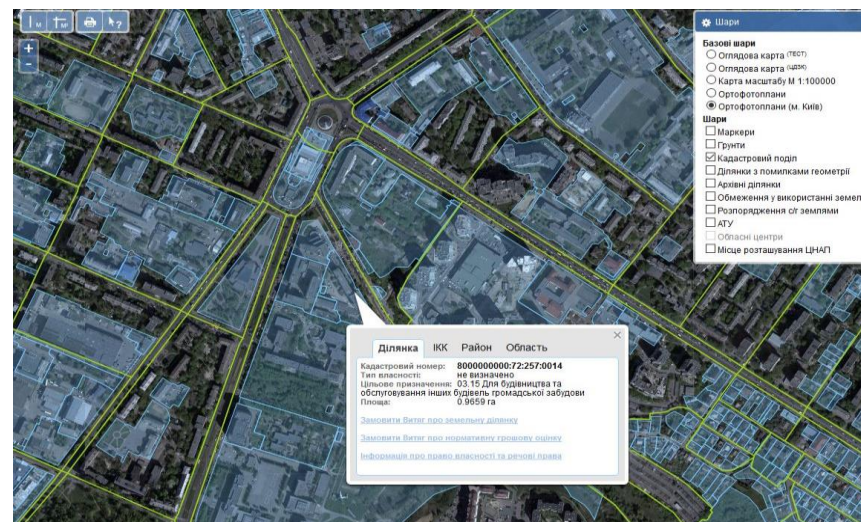
What is there in State Land Cadastre of Ukraine?

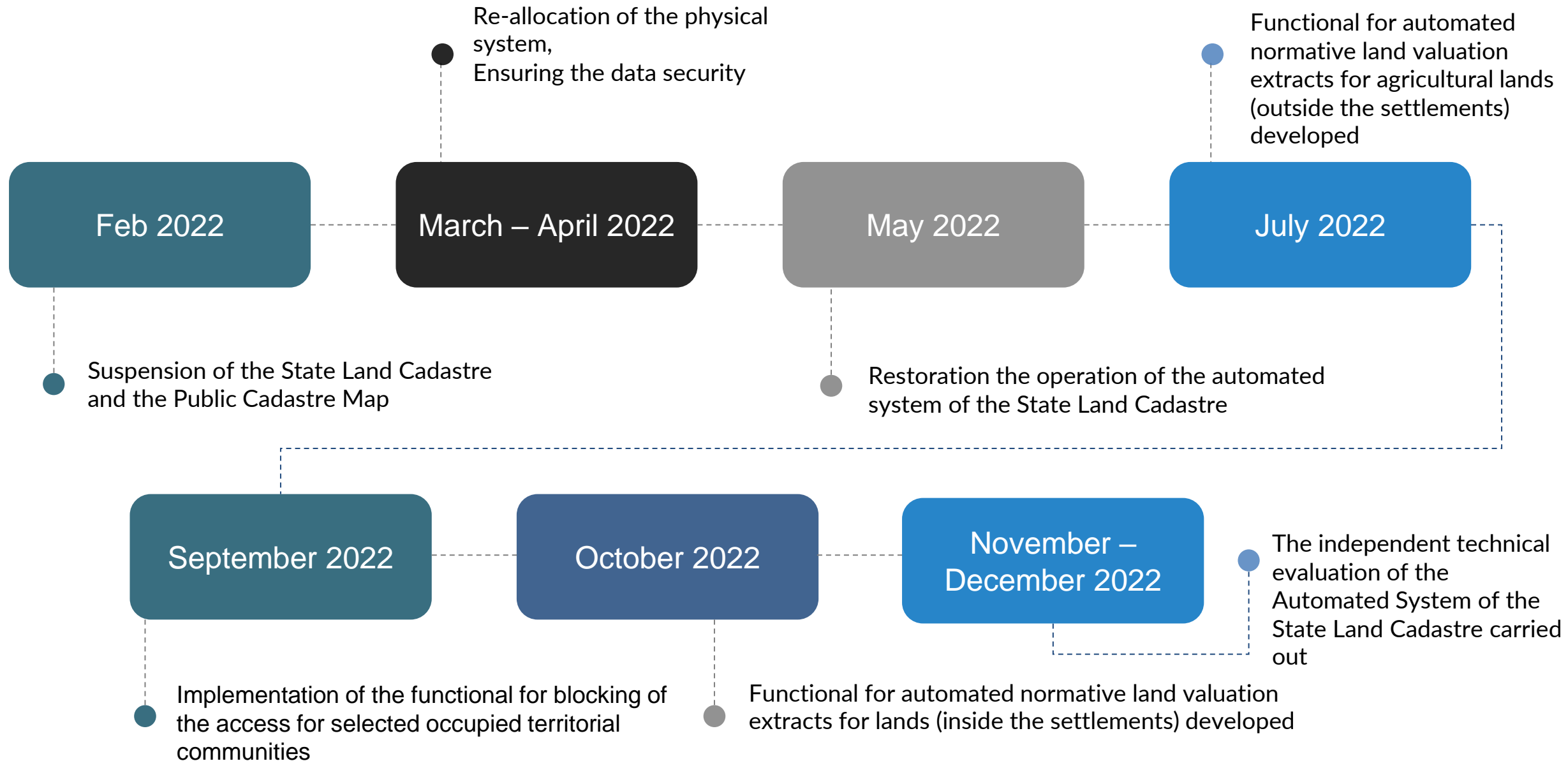
State Land Cadastre system contains such data:

- ✓ Administrative boundaries
- ✓ Index cadastral maps
- ✓ Ortho-photo
- ✓ Land parcels
- ✓ Agro-industrial soil groups
- ✓ Limitations on land use
- ✓ Nature reserve areas
- 50% Complex plans of territorial development
- 50% Functional areas

Auto Data Exchange with the Registry of Rights under
Ministry of Justice of Ukraine
(online)

- ✗ Ownership rights registration
- ✗ Real estate cadastre
- ✗ Address registry

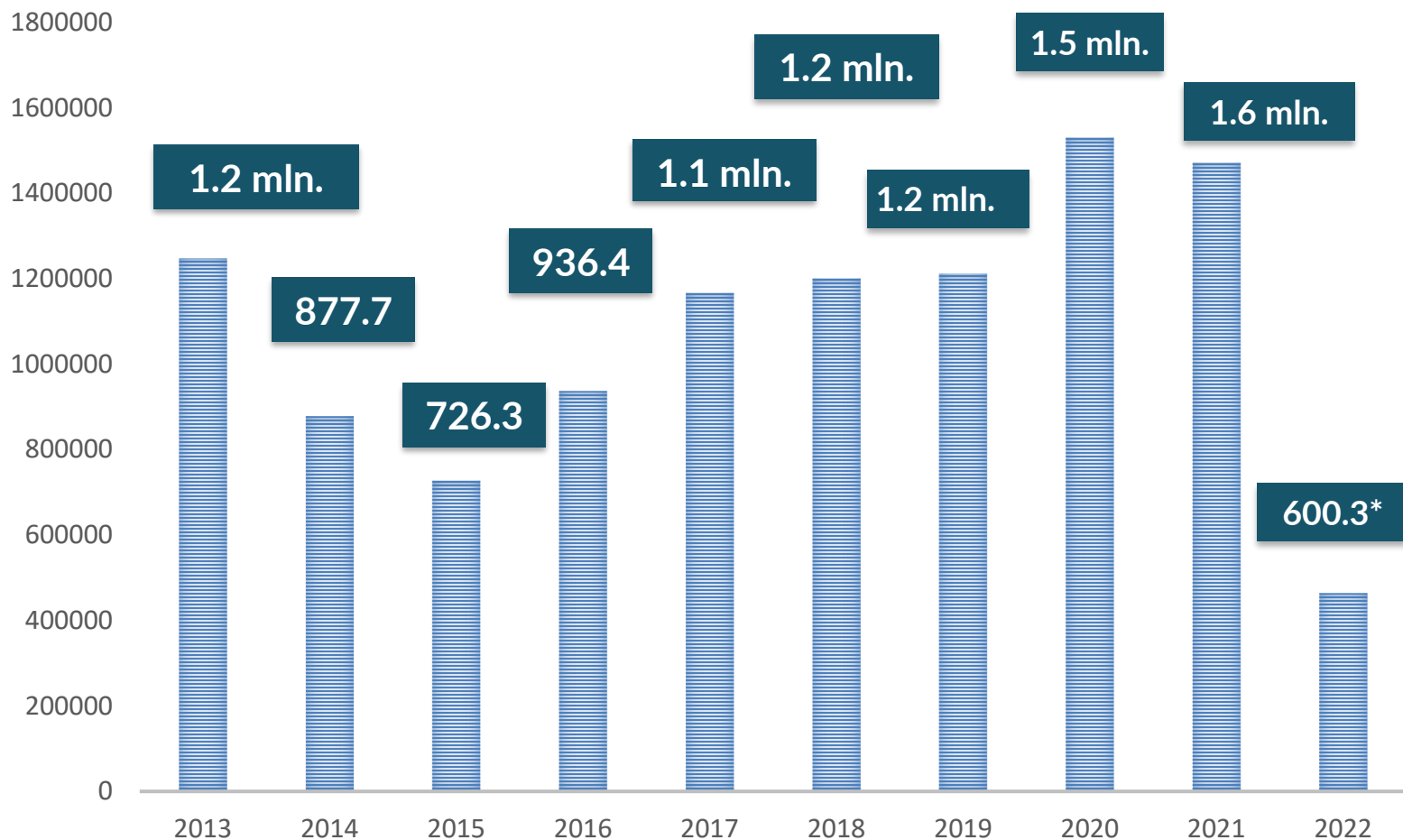






Dynamics of land parcels' registrations

Registration of land parcels



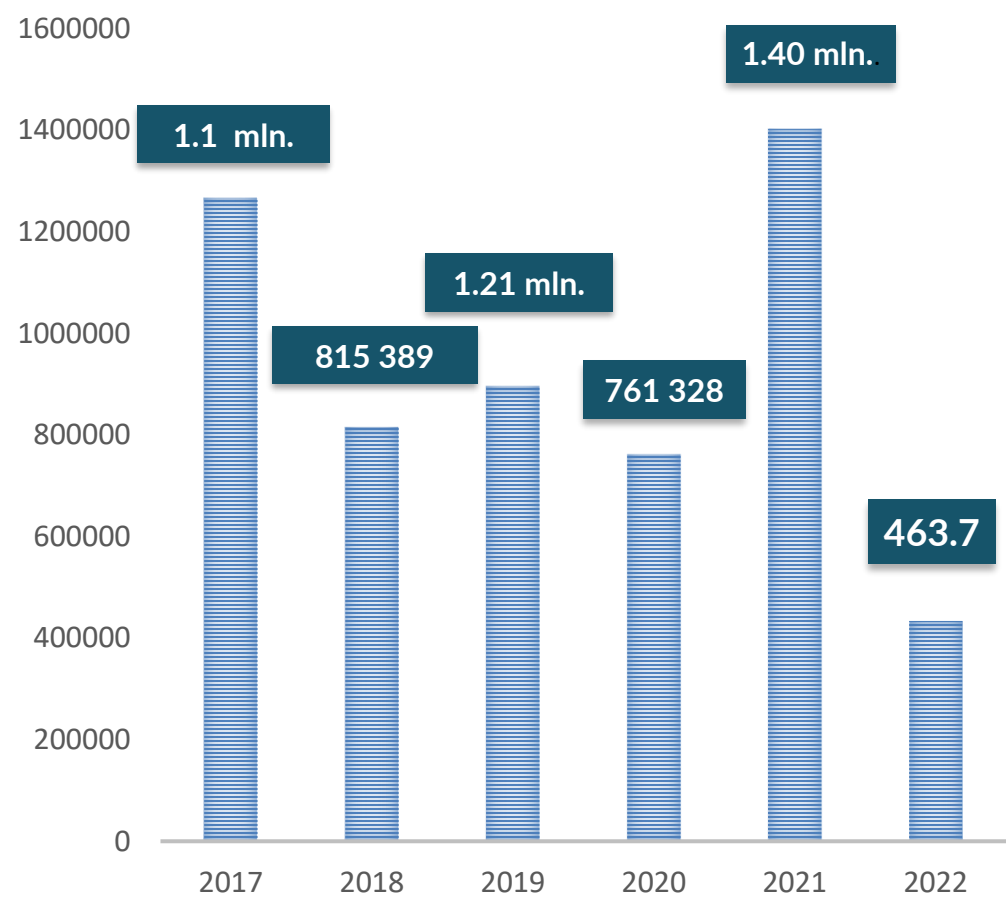
**Obtaining the land into ownership is prohibited
during the martial period**

166 297
ONLINE
in 2022



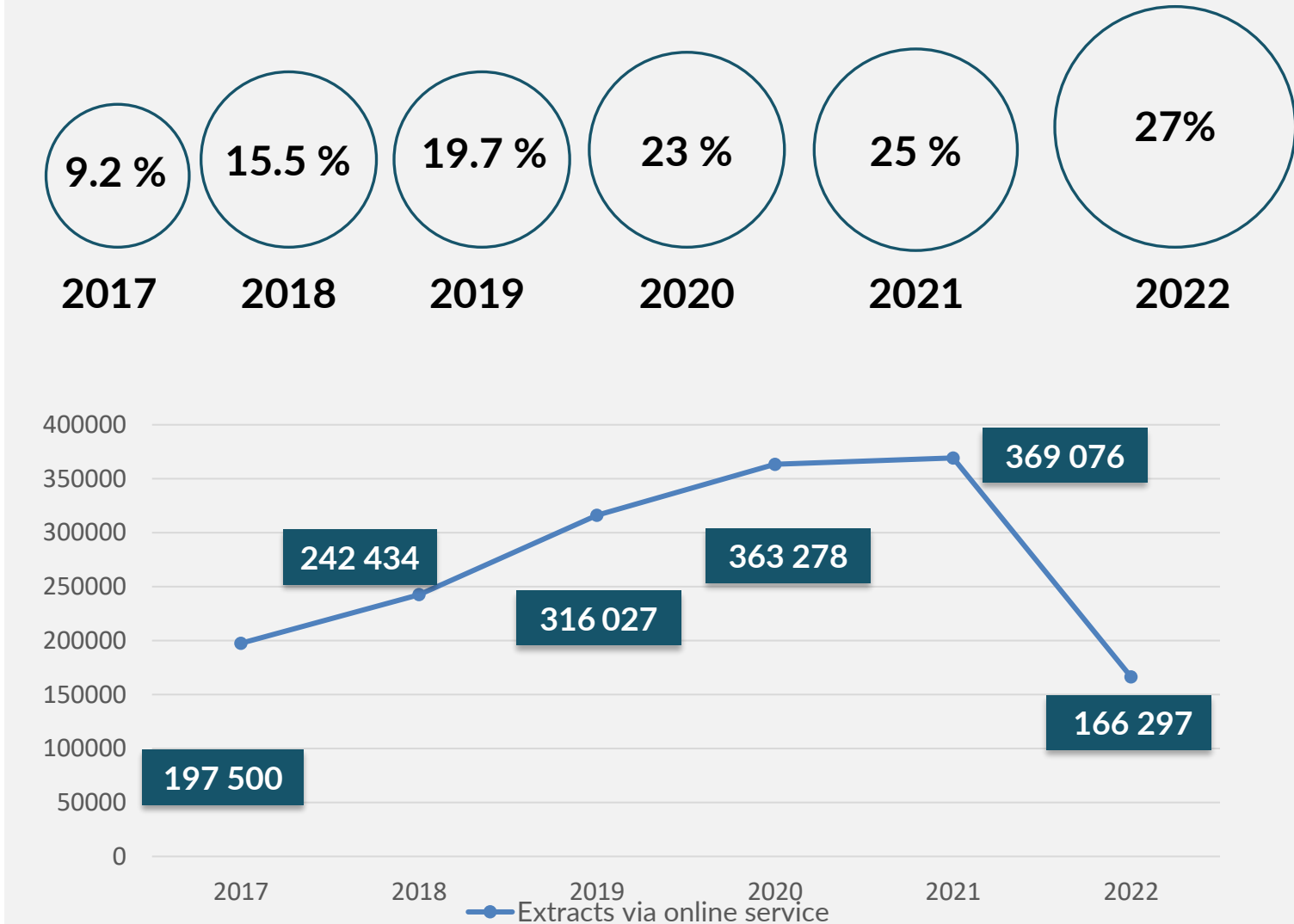
28 %

Extracts from State Land Cadastre (paper form)



Due to closed Public Cadastre Map the share of E-services went down

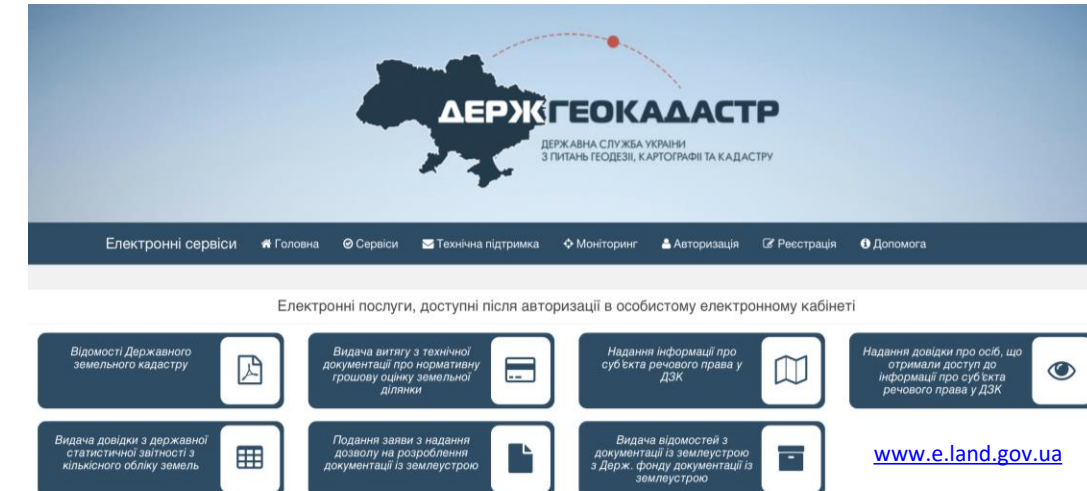
Share of on-line extracts



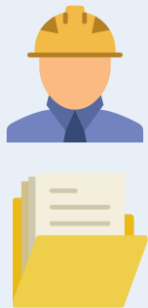
Portal of E-services – has been operational during 2022

Exterritorial approach – is the key principle of the E-services operation

The business process of the exterritorial service:



Supply of the documents or request for the service



Center of Administrative Services



OR



Portal of E-Services



Automated system randomly choose any of the cadastral registers to fulfill the service



Typically it takes 5 days for the completion of the service

Ready service (extract, registration, etc) is sent to the Centre of Admin Services or to email

Fully automated extracts on normative monetary valuation in 2022

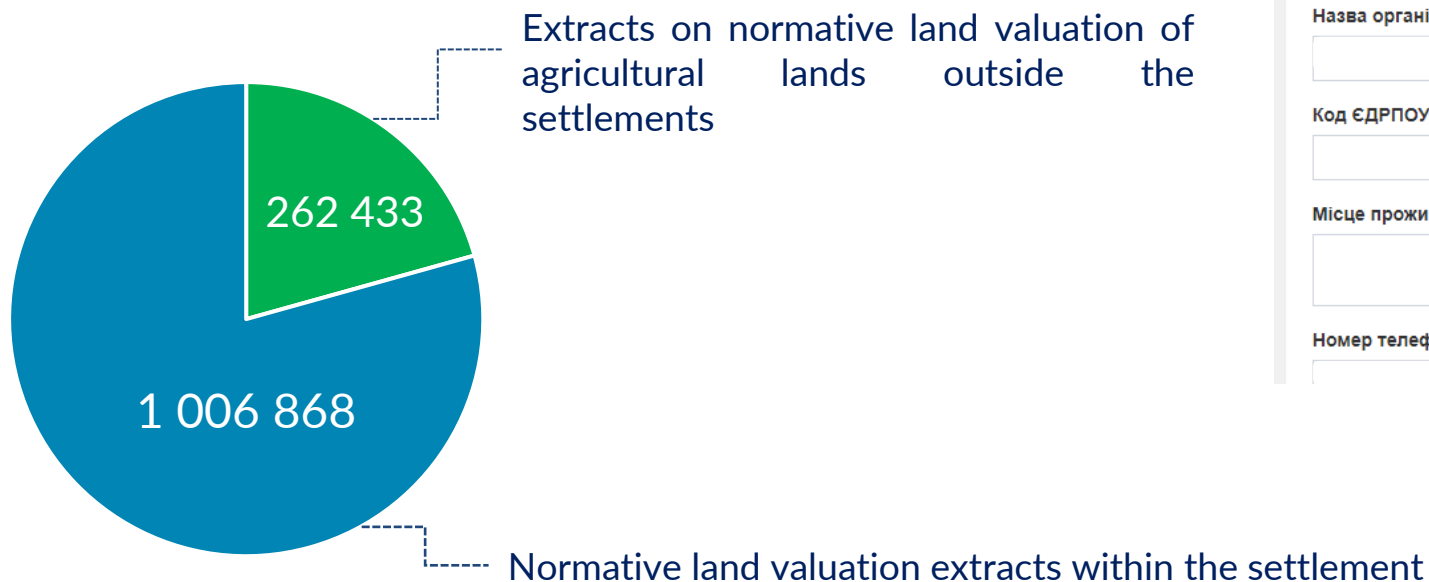
Two new fully automated services were implemented in 2022

From Oct 2022 extracts on normative
land valuation

100 %

Online

In case of the information
availability in the State Land
Cadastrе on both the land NMV of
the settlement and the land plot
itself



Заява про надання відомостей з Державного земельного кадастру [Інструкція](#)

Державна служба України з питань геодезії, картографії та кадастру

Тип заяви *

Землі в межах території адміністративно-територіальної одиниці

Виберіть

- Землі в межах території адміністративно-територіальної одиниці
- Обмеження у використанні земель
- Витяг з ДЗК про земельну ділянку без даних від РРП
- Викопіювання з картографічної основи ДЗК, кадастрової карти (плану)
- Нормативна грошова оцінка земельної ділянки (землі населених пунктів)**
- Нормативна грошова оцінка земельної ділянки (с/г призначення за межами населених пунктів)

d.makarenko89@gmail.com

Заявник *

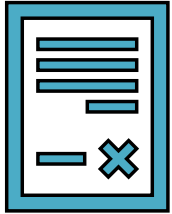
Назва організації *

Код ЄДРПОУ *

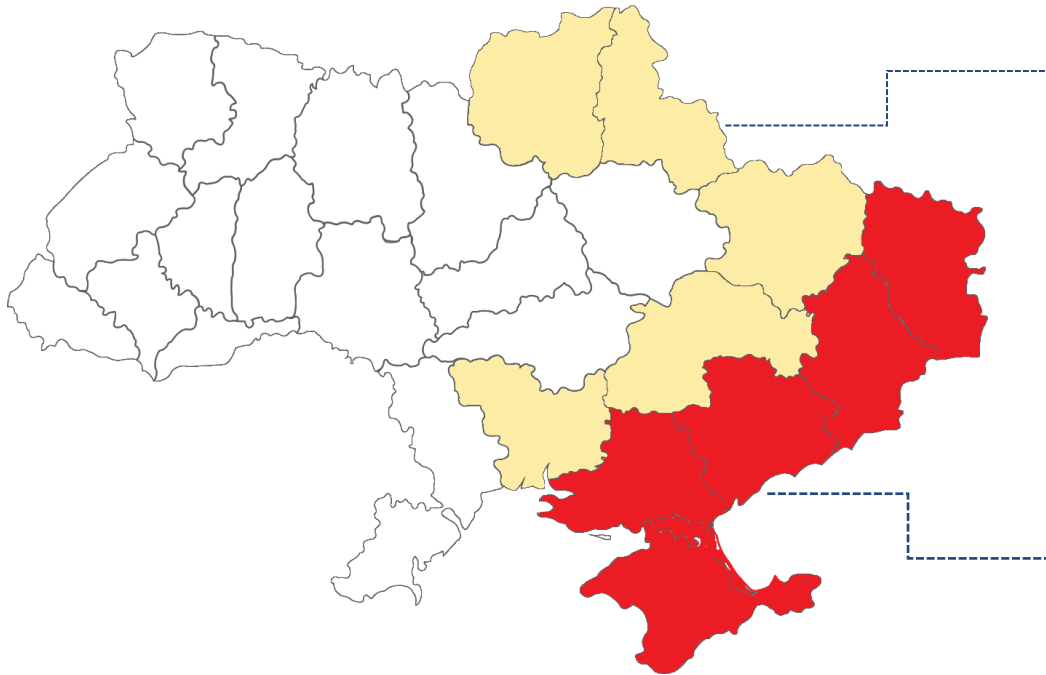
Місце проживання фізичної особи / Місцезнаходження юридичної особи *

Номер телефону

Operation of the State Land Cadastre under the martial time



- ❑ The List of Territorial Communities Located in the Area of Military (Combat) Operations or Temporarily Occupied, Surrounded (Blocked) is being approved by the Ministry of Reintegration of the Temporarily Occupied territories (monthly update)
- ❑ Order of the StateGeoCadastre dated 24.02.2022 No. 7-a "On suspension of the automated system of the State Land Cadastre and the Public cadastral map for:
 - ✓ Avoidance of manipulations with the SLC data
 - ✓ Employees' life and health preservation
 - ✓ Personal data protection
- ❑ Order of the StateGeoCadastre "On approving of the administrative districts with terminated access to the State Land Cadastre



Territorial communities located in the military (combat) operations area or under temporary occupation, encirclement (blockade)

Oblasts where territorial communities are either partially located in the military (combat) area operations or have been affected (destroyed/damaged) as a result of military (combat) operations



Major changes in Cadastre operation in 2022

IT WAS (PEACE TIME)

It has become (WAR)

Exercise of authority by state cadastral registrars



Powers are exercised by all registrars throughout Ukraine



The SGC approves the list of registrars to operate in the territories of certain administrative territorial units

Publication of SLC information on the Public Cadastral Map



All SLC information is public, the PCM is operating, all layers and information are published



The SLC information is not published, the PCM does not function

Access to SLC information on the coordinates of the turning points of the boundaries of SLC objects



The information is contained in all forms of documents provided in the form of administrative services



Use of information is allowed only to certain registrars, land managers, surveyors; information is not provided in extracts, copies of SLC documents

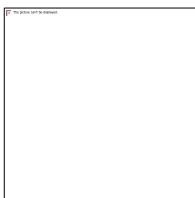
Procedure for disconnection (termination of access) to SLC registrars, other users



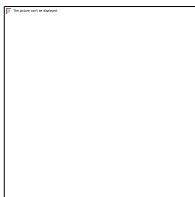
Access to the SLC is terminated in case of appeal against decisions, actions, inaction, due to violation of the law; there is a possibility to restore access



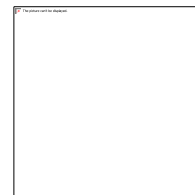
Access of registrars is terminated for violation of certain restrictions on decision-making. Access of other users is terminated for violation of the law without the possibility of recovery. On the territory of the temporarily occupied administrative territorial units, access to the SLC of all users is suspended



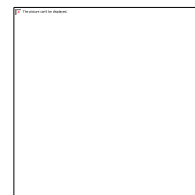
Proper security of the national registries and data bases, mainly State Land Cadastre, NSDI and Geodetic Network



Hardware to ensure the security of the systems and registries



Cloud-based storage for the strategic systems' operation



Stable energy supply for the systems' operation

THANK YOU
for your attention!

Alina Sushchyk,
Head of the International
Cooperation Division,
StateGeoCadastr

☎ +38 044 299 35 42

✉ IR@land.gov.ua

